



Inesoft Cash Organizer Premium 2008 User Manual

Inesoft Cash Organizer Premium 2008

Copyright © Kim Tkhe Sik, Lukiyanov Maxim, 1998 - 2008. All rights reserved.

Cash Organizer is a registered trademark of Inesoft. Microsoft ActiveSync, Microsoft Money and Microsoft Windows are registered trademarks of Microsoft Corporation. Quicken is a registered trademark of Intuit. All other trademarks are the property of their respective companies.

The information in this document is subject to change without notice. No part of this document may be reproduced or transmitted in any form or by any means, electronic or mechanical, for any purpose, without the express written permission of Inesoft.

Table of Contents

1	Installation	4
2	Registration	5
3	Synchronization - introduction	5
4	Setting the synchronization properties	5
5	Family mode of operation	7
6	Synchronization – how does it work?	7
6.1	Selecting a desktop companion	7
6.2	Safety of synchronization	8
6.3	Synchronization process	8
6.4	Do I need to backup Cash Organizer data if it is not my main database?	8
7	Conflicts resolution	8
7.1	Category and project levels	8
7.2	Changes conflict	9
8	Getting started Cash Organizer	9
8.1	Running the program for the first time	9
8.2	Program modes	10
8.3	Menus and pop-up windows	10
8.4	Help system	11
9	Account center	11
10	Transaction register	12
10.1	Entering a new transaction	12
10.2	Transaction attributes	13
10.2.1	Payee	13
10.2.2	Date	13
10.2.3	Amount	13
10.2.4	Category	13
10.2.5	Project	13
10.2.6	Contact	13
10.2.7	Number	14
10.2.8	Mark	14
10.2.9	Note	14
10.3	Account balance reconciliation	14
10.4	Transaction filter	15
10.5	Delete old transactions	16
10.6	Account group configuration	16
11	Project center	17
11.1	Create, edit and delete projects	18
11.2	View current balance of the project	18
12	Planning center	18
12.1	Create scheduled transaction	19
12.2	Create scheduled repeating transaction	19
12.3	Scheduled transaction groups	19
12.4	Template usage in the transaction's note	20
12.5	Scheduled transaction reminder	21
12.6	Prognosis of scheduled transactions	21
12.7	Inactive scheduled transactions	21
12.8	Partial performance of scheduled transaction	22
13	Category center	22
13.1	Create and edit category	22
13.2	Delete category	23
14	Budget center	23
14.1	General principles	23
14.2	Create new budget group	24
14.3	Add new category to the budget	24
14.4	Delete category from the budget	24

14.5	Rename budget.....	24
14.6	Delete the budget group.....	24
14.7	Set the category limits.....	24
14.8	Set a date range for budget planning.....	25
14.9	View the results.....	25
14.10	Exclude transactions from the budget.....	25
14.11	Budget transactions report.....	26
14.12	Notification of a budget limit exceeding.....	26
15	Report center.....	26
15.1	Reporting.....	26
15.2	Adjusting filter.....	27
15.3	Selecting the report's form.....	28
15.4	Process the report made.....	30
15.4.1	Presentation form for the report selection.....	30
15.4.2	Changing filtration parameters.....	30
15.4.3	View small-sized elements.....	31
15.4.4	Open a legend completely or partially.....	31
15.4.5	Getting detailed information on the report's elements.....	31
15.4.6	Create an auxiliary report.....	31
15.5	Save report to file.....	32
15.6	Transfer data into other programs.....	32
15.7	My Reports mode.....	32
15.8	Printing.....	33
16	Payee center.....	33
16.1	Create and edit payee.....	33
16.2	Delete payee.....	34
16.3	Update memorized transactions.....	34
17	Loan calculator.....	34
18	Cash Organizer Express.....	34
18.1	Entering transactions.....	35
18.2	Express search.....	35
18.3	Express settings.....	35
19	Today plug-in.....	36
20	Program settings.....	36
20.1	Screen view.....	37
20.2	Currencies.....	37
20.3	Today plug-in setup.....	38
20.4	Password.....	38
21	Working with data.....	39
21.1	Create and renew archive data file.....	39
21.2	Restoring existing archive data file.....	39
21.3	Resetting the database.....	40
21.4	Data exchange with other applications.....	40
21.4.1	Data export.....	40
21.4.2	Data import.....	40
22	Technical support.....	41

1 Installation


System requirements:

1. Microsoft ActiveSync or Windows Mobile Device Center (Windows Vista);
2. Microsoft Money* 2005, 2006, 2007 or Money Plus;
or Intuit Quicken* 2003, 2004, 2005, 2006, 2007, 2008 (US/Canadian).

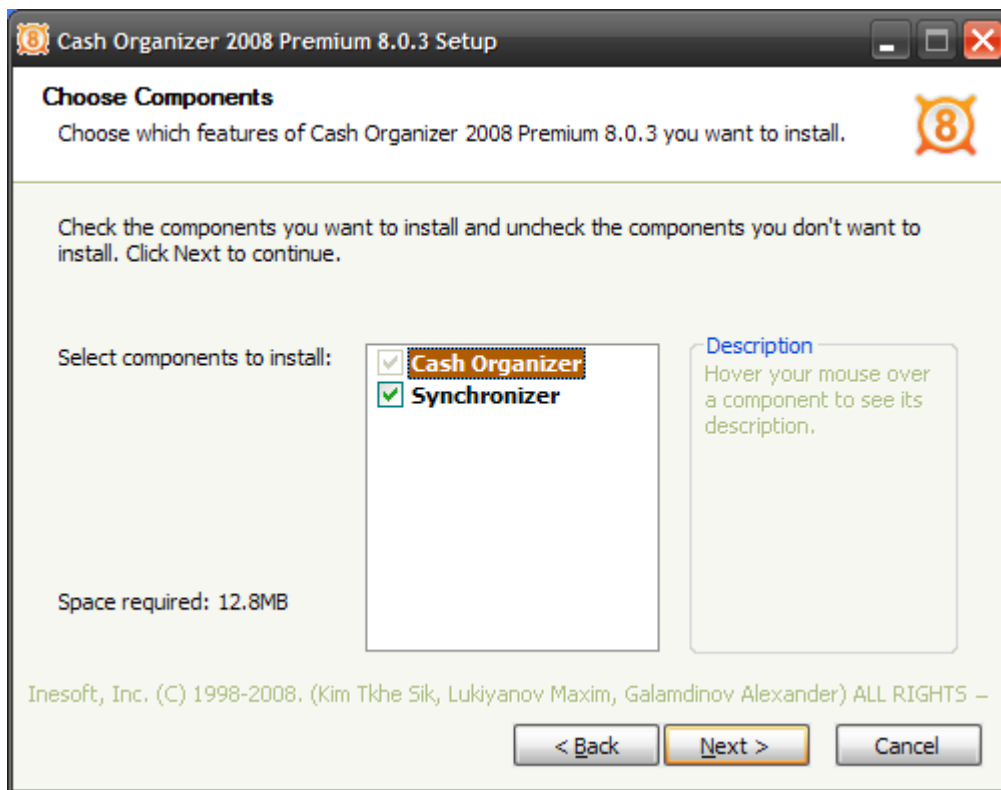
*Cash Organizer can be used as a stand-alone program on your mobile device, these programs are not required if you are not going to synchronize your data.

To install Cash Organizer, perform the following steps:

1. Install Microsoft ActiveSync or Windows Mobile Device Center (Windows Vista) on your desktop computer;
2. Connect your Pocket PC;

Note. To ensure that your PC and Pocket PC are connected properly, look at the Task Bar. The ActiveSync icon must be green .

3. Run the installation program. While the installation is running, several dialog boxes will appear on the screen. Click **Next** each time to continue the installation process;
4. The synchronizer installation is set to on by default; unmark the checkbox if you do not need your data to be synchronized with MS Money or Quicken.



Note.

If you are upgrading your copy, please make sure that you have a [backup copy](#) of your financial data and then remove your previous version from PC and Pocket PC using the Remove Programs tool before you install the upgrade.

2 Registration

Cash Organizer is protected from illegal distribution. A trial copy has no limitations in functionality for 25 days. After that period, Cash Organizer will stop working if not registered. Please visit www.inesoft.com/reg to make a payment.

Each copy of Cash Organizer has its own identification number (**Product ID**). This number is indicated in the corresponding line of the registration window. To register your copy and remove the time limitation, run Cash Organizer on your mobile device, open **Tools/Register...** menu, enter the **Registration Key** delivered by Inesoft Company into appropriate fields and click the **OK** button.

Cash Organizer Premium

Product ID automatically generated for your mobile device. You must enter Unlocking Code manually.

Product ID: 59170146

Reg. Key: [] - [] - [] - []
[] - [] - [] - []

OK Cancel

You can receive Unlocking Code at www.inesoft.com/reg

1	2	3	4	5	A	F	K	←
6	7	8	9	0	N	R	T	

3 Synchronization - introduction

Inesoft Cash Organizer 2008 Premium has a synchronization provider (software plug-in) for Microsoft ActiveSync. It is intended for continuous exchange of financial data between desktop computer (Intuit Quicken or Microsoft Money applications) and a mobile device (Inesoft Cash Organizer application).

Cash Organizer synchronization tool enables to:

- Transfer financial information (accounts, transactions including split details, categories and projects, currencies and **budgets [MS Money only]**) from desktop computer to mobile device and from mobile device to desktop computer;
- Update your desktop data file with changes made on the go in mobile device and vice versa;
- Instantly synchronize all changes while your device is connected to desktop computer (this function requires that you close Quicken after making changes);
- Resolve conflicts when the same items were changed in desktop and mobile device databases.

Inesoft Cash Organizer Sync consists of two parts. First part called desktop synchronization provider resides on user's desktop computer and works under control of Microsoft ActiveSync application. Second part called device synchronization provider is located on a mobile device.

Note.

Install Cash Organizer Sync after a desktop companion to prevent a configuration problem.

Warning.

Inesoft Cash Organizer Sync does not make backup copies of your Microsoft Money or Quicken file, so make sure you have a reserve copy of your financial data before you start synchronization for the first time. This will allow learning the synchronizer safely and restoring your previous data file if necessary.

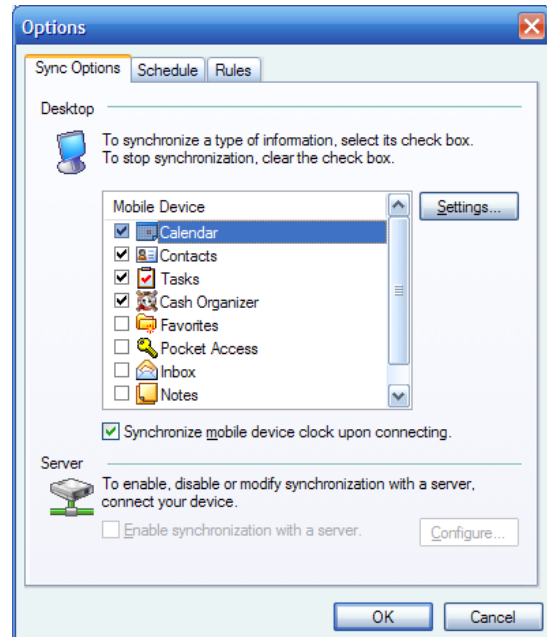
4 Setting the synchronization properties

When Inesoft Cash Organizer Sync is started for the first time, it automatically opens Settings dialog. In that dialog you can select which file and accounts you want to synchronize with your Cash Organizer

database and other synchronization options. By default, last used file is selected and all accounts are marked except closed ones. After you confirm initial configuration by pressing **OK** button synchronization will start.

To open Inesoft Cash Organizer Sync settings, perform the following steps:

1. Open Microsoft ActiveSync window by double-clicking on its icon in system tray or starting it from **Start -> Programs** menu;
2. Open **Options** dialog using the Microsoft ActiveSync menu;
3. Choose **Cash Organizer** item from the list. Make sure it is in checked state, what means Cash Organizer Sync is enabled. In opposite case check Cash Organizer item, press OK and open Options dialog again;
4. Click **Settings** button to open Inesoft Cash Organizer Settings dialog.

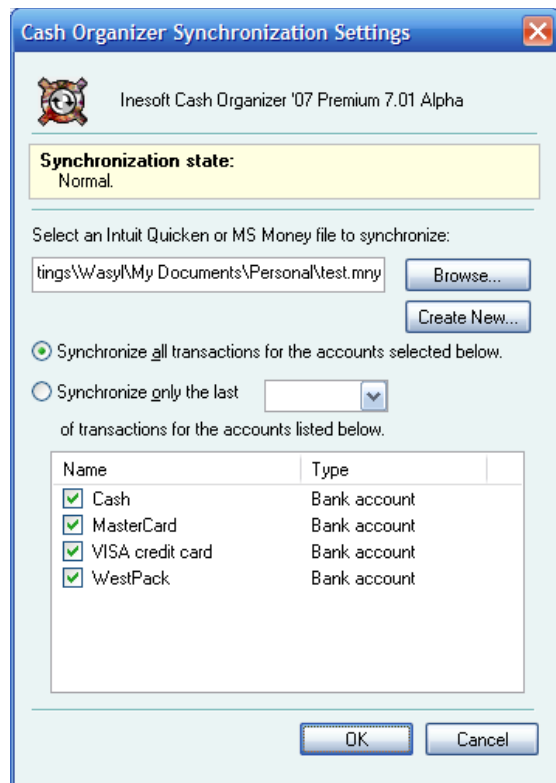


Using **Settings** dialog you can choose Microsoft Money or Quicken file you want to synchronize your Cash Organizer data with.

- Press **Browse** button and select a file if you would like to upload your existing Microsoft Money or Quicken file to mobile device (this process will delete your Cash Organizer file);
- Press **Create New** button if you would like to transfer your Cash Organizer data to new Microsoft Money or Quicken file (this process creates a new file on your desktop computer). Select file format from the **Save As Type** list.

Note.

If a password protected file was selected, you will be prompted for a password. Provided password will be saved for future use in safe, encrypted form.

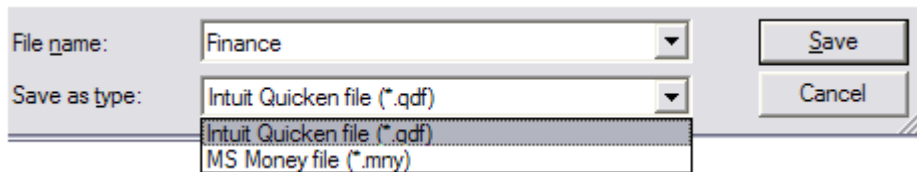
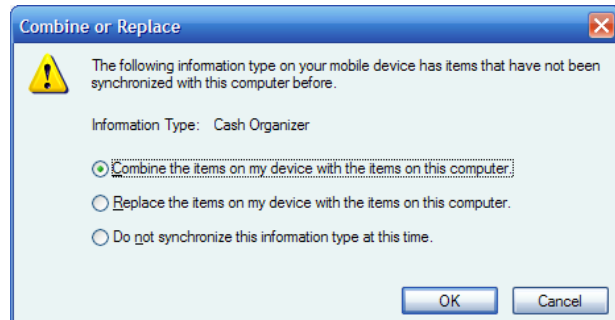


Depending of the data amount you have, you can choose to synchronize "All transactions" or only those, which are not older than specified number of weeks. This option is useful if you do not want to have all your old records on mobile device. Although it may shorten first synchronization time, it also limits deepness of your mobile reports.

The last option you can configure in Cash Organizer Sync is account set that will be synchronized with mobile device. Only marked accounts in the list will be synchronized.

If you select to synchronize your data with existing Microsoft Money or Quicken file or create a new one and your Cash Organizer data file is not empty, you'll see a warning message. You have two options:

- **Combine the items on my device with the items on this computer** – in this case your Cash Organizer database will be transferred into a new data from Microsoft Money or Quicken file will be uploaded to your device or both databases merged;
- **Replace the items on my device with the items on this computer** – in this case all data on your mobile will be erased and replaced with data from your MS Money or Quicken file.



Note.

If you add new account on the mobile device, it will automatically appear in the list in checked state, but if you delete an account from mobile device, it will be deselected from the list and will not be deleted from your PC data file. This feature safes your data from occasional deletion.

All changes to configuration can be cancelled by **Cancel** button. To confirm settings change press **OK**, the synchronization will start.

5 Family mode of operation

It is possible to synchronize multiple mobile devices with a desktop computer; the synchronizer will transfer data between all devices. Each mobile device partnership can have its own Cash Organizer Sync settings, so you can have different account sets and even files on different devices. Account sets can also overlap each other.

Note.

ActiveSync allows a handheld device to be synchronized with two desktop computers only, but it is possible to create unlimited number of partnerships on one PC. In that case each handheld device has own unique settings and Quicken or Microsoft Money data file to synchronize with.

6 Synchronization – how does it work?

6.1 Selecting a desktop companion

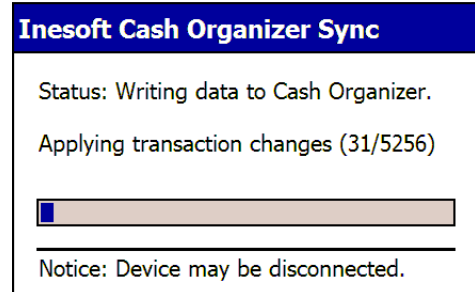
Cash Organizer Sync enables to switch between synchronization with Quicken or Microsoft Money without a need to reinstall software; however, you can synchronize your data simultaneously with one Quicken or Microsoft Money file. To change data file, open Cash Organizer Sync [settings](#) and select a file or create a new one.

6.2 Safety of synchronization

Cash Organizer Sync synchronizes data using temporary files and in case of any error or interruption, your original data file will be intact.

6.3 Synchronization process

In daily use, the synchronizer needs a little time to find out the changes you made to both databases and synchronize your data, but if you perform your first synchronization, it might take quite a while, especially if you transfer data from PC to handheld device. If the following dialog appears on PDA screen, you may disconnect it; the data was already exchanged and copied to your mobile device and Cash Organizer Sync can process database updating without a need to be connected to PC.



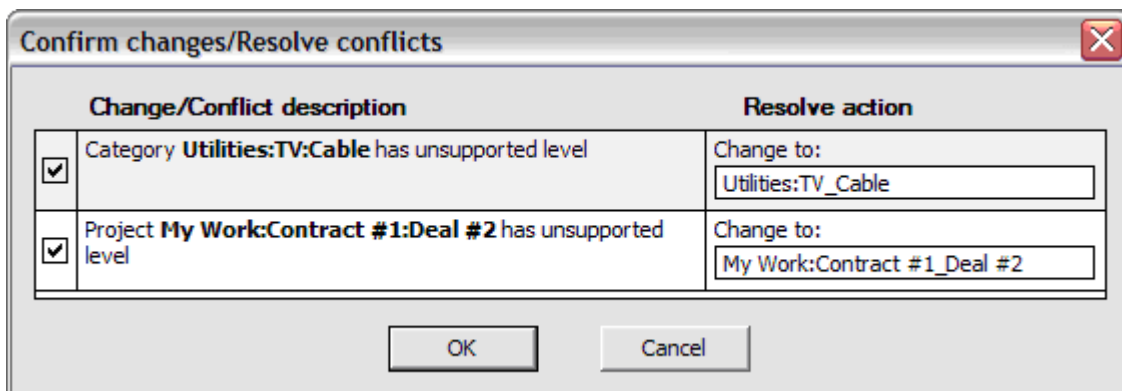
6.4 Do I need to backup Cash Organizer data if it is not my main database?

Cash Organizer has a powerful and easy to use [tool](#) for keeping your data safe. In the case of data restoring from backup (for example after a hard reset), Cash Organizer Sync can repair links between records in the databases. This can prevent a time-consuming process of first synchronization and (what is more important) keep your data that cannot be synchronized like planner. Yes, it is recommended to backup Cash Organizer database too.

7 Conflicts resolution

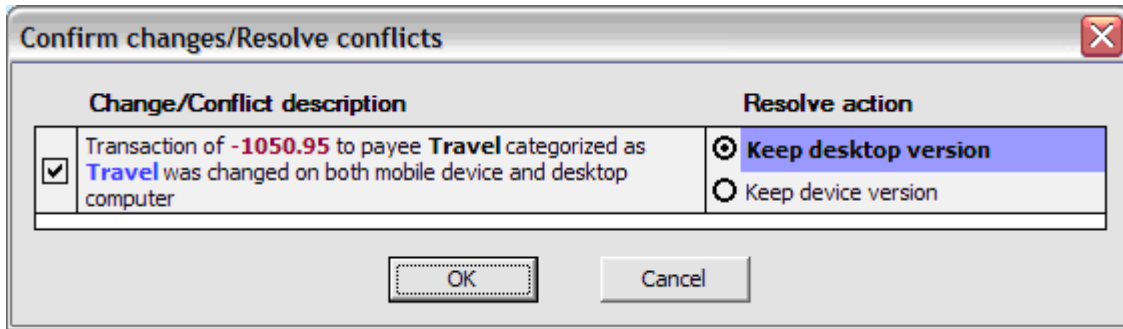
7.1 Category and project levels

Because of limited levels of categories and projects/classes supported by Microsoft Money and Quicken, Cash Organizer Sync is forced to move up all categories and projects/classes on unsupported levels in Cash Organizer's database to meet the requirements of desktop program. For example, if you have a project called "My Work:Contract #1:Deal #2" (three levels separated by colons), the Sync will move "Deal #2" project to second level and rename it to "Contract #1_Deal #2" for synchronization with Microsoft Money, as for Quicken the same project will be moved to first level and renamed to "My Work _Contract #1_Deal #2". The conflict resolution tool allows editing a name of category or project/class that is being moved to other level.



7.2 Changes conflict

You can modify data in both Microsoft Money / Quicken and Inesoft Cash Organizer simultaneously. If there are no conflicts between changes they will be silently synchronized. In the case when you modified both desktop version and mobile device version of the transaction, account, category or project there is a conflict. For transaction conflict resolution, the following dialog is displayed. When choosing direction in which conflict will be resolved you decide which version of data should be overwritten. The same dialog with different content appears if you occasionally modified account, category or project on both desktop computer and mobile device.



8 Getting started Cash Organizer

This chapter contains information, which will help you learn the first steps of using Cash Organizer. You will learn:

- [How to run the program and create your first account;](#)
- [The different program modes;](#)
- [How to use the Help system of the program.](#)

8.1 Running the program for the first time

To run the program, go to **Start -> Programs** and tap on the Cash Organizer's icon .

When running the program for the first time, it will prompt you to create your first account or restore your financial data from a Cash Organizer backup file. Press **Create** button to create your first account.

- Type the account name in the **Description** field – the program will use this name for account processing;
- Select a currency name from the **Currency** drop-down list which will be used as the primary one for this account;
- Enter an initial account balance (optional) in the **Opening Balance** field. This value will be added to the total account balance;
- Enter a **Minimum Balance** if notification is needed when the current account's balance drops below this value;
- In the **Note** field, you can enter an account description (for example, a bank account number, credit card number, etc.).



When the account description is finished, click **OK** button. The program is ready for use.

8.2 Program modes

Cash Organizer has eight modes corresponding to the different functions performed:



Account Center allows adding, editing and deleting accounts, as well as entering new transactions, importing and exporting data and reconciling accounts' statements. Notification of scheduled transactions, when they come due, will occur in this mode as well.



Transaction Register shows registered transactions list, allows filtering transactions, performing various actions on transactions and switching between accounts;



Project Center controls receipts and expenditures for each project. You can see all related transactions and balances;



Planner Center allows registering scheduled transactions (single and repeating) and forecasting;



Budget Center lets you plan your budget based on categories and projects as well as forecasting spending;



Report Center lets you display financial information in graphical and text mode, export it to a file or make a printout without needing to use a desktop computer;



Payee Center allows to manage your payee list and update memorized transactions;



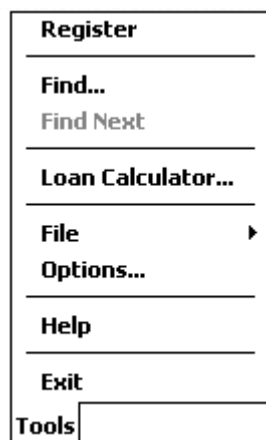
Category Center allows you to add, edit and delete categories.

To switch between modes, tap on the appropriate icon.

Note. Use button to access Payee and Category tabs.

8.3 Menus and pop-up windows

Tools menu:



- Opens Cash Organizer registration window*;
- Opens search dialog;
- Starts searching for next item;
- Opens Loan Calculator tool;
- Opens Cash Organizer options window;
- Opens Cash Organizer help system;
- Closes the program

- Opens About window -
- Data backup tool -
- Data restore tool -
- Deletes all financial data -





Cash Organizer has an advanced built-in information system. Use the tap&hold technique to open a pop-up window for additional information on selected item or to see available actions.

* - available if your copy of Cash Organizer is unregistered.

8.4 Help system

A help system is included with the program to help you solve problems. To run the system, open the **Tools/Help** menu. Select the required topic by tapping on it. The content of the topic will be displayed. Some words (marked with blue font) contain links to other topics. After clicking such a word, information on the meaning of this word will be shown. The following buttons are in the lower part of the screen:

-  Back to the previous topic;
-  Forward to the topic you came from.

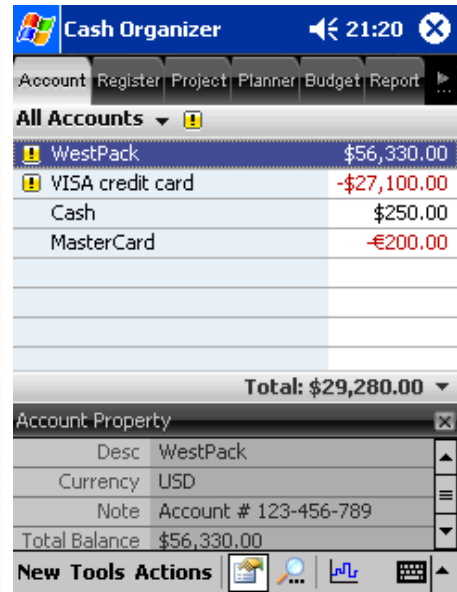
9 Account center

This is the home window that contains a list of all accounts, allows switching between them and notifies you of scheduled transactions that are due.

Accounts are intended for keeping track of the money you possess or expect to spend. Each account can contain some initial funds and list of the related transactions. An example of such a list is a bank account statement for a certain period.

Various types of account can be created. You can open accounts showing:





- Various forms of monetary assets (cash, bank account, credit card, etc.);
- Names of your employees to whom you are supposed to transfer salaries;
- Names of the companies you deal with, etc.



To open an account in the list, tap on its name twice or use hardware **Enter** button.

Menus and buttons available in this mode:

<p>New Account...</p> <p>Edit Account...</p> <p>Delete Account...</p> <hr/> <p>Manage Account Groups...</p> <hr/> <p>Import and Export ▶</p> <hr/> <p>Reconcile Account...</p> <p>Delete Old transactions...</p>	<p>- Creates new account;</p> <p>- Edits selected account;</p> <p>- Deletes selected account;</p> <p>- Account groups configuration window;</p> <hr/> <p>- Opens reconciliation tool window;</p> <p>- Opens tool for deleting old transactions.</p>
<p>Actions</p>	<p>Imports QIF file -</p> <p>Imports OFX and QFX files -</p> <p>Opens data export window -</p>
	<p>Import QIF...</p> <p>Import OFX/QFX...</p> <hr/> <p>Export QIF/Excel/TXT...</p>

-  Show/hide Account Property window;
-  Find/Find Next transaction;
-  Account balance report;
-  Notification flag – informs you about due scheduled transactions and exceeded minimum balances. Tap on it to see detailed info.

Note. To remove closed account from the list, highlight it; select the **Actions/Edit Account** menu item and mark the **Closed/Hidden** checkbox.

10 Transaction register

The account balance is determined by the total of all receipts and expenditures plus any initial funds.

A transaction is a basic financial operation of money receipt or expenditure as well as money transfers from one account to another.

There are three types of transactions:

- Simple transaction;
- Compound transaction (split);
- Transfer.

Total balance and reconciliation info

10.1 Entering a new transaction

To initiate a new transaction, select **New** in Account Center or single account mode. An appropriate window will be opened.

As soon as you start typing in the **Payee** field, Cash Organizer starts filtering the payee list. If you select a payee for the list, transaction properties will be filled out with data from memorized transaction.

Cash Organizer also allows making compound transactions (splits). A split is a transaction where you break up a transaction into parts. For example, if you are recording your paycheck, but this month you also got a bonus, you can make that a single transaction with two parts.

Note. To create a money transfer, select an account you want to transfer funds to from the Category drop-down list, you will find all accounts at the end of the list.

10.2 Transaction attributes

Each transaction contains certain attributes that allow you to classifying your receipts and expenditures by various characteristics.

10.2.1 Payee

A transaction's description is the attribute displayed in the transaction list. You should be use a description the can be easily recognized in the transaction list. For example, you can use "Hotel" to describe a transaction for a hotel room payment.

10.2.2 Date

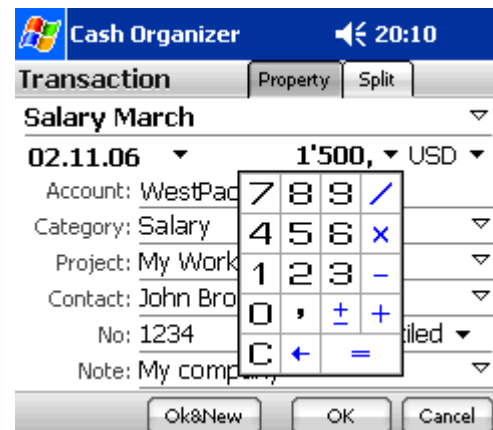
Transaction date shows the actual date the transaction was recorded. This information is very useful, as it allows tracing the balance changes over the course of time. To set the date of the transaction, select ▼ next to the date field (by default, the field will be filled with the current date). The calendar for the current month will appear on the screen. If you want to change the month, press the arrow next to the month's name. Select the required month and date in the calendar.

10.2.3 Amount

Amount is one of the key attributes of the transaction. It shows the amount of the receipt or expenditure. Amount is shown in the transaction attributes window next to the date.

If the transaction amount is known, move to the transaction amount field and enter the amount. A positive value indicates a receipt and a negative value indicates an expenditure.

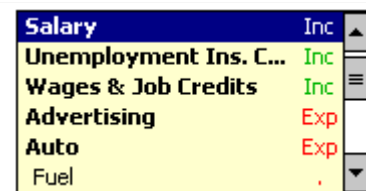
If the amount needs to be calculated first, you can use the built-in calculator. For this purpose, press the ▼ next to the amount and calculate the transaction amount. After pressing "=", you will see the result in the amount field.



To select the transaction currency, press ▼ in the currency field next to the transaction amount. Then select the required currency's symbol from the list. The program will confirm an exchange rate and save it in the currency history table.

10.2.4 Category

Category allows you to classify your transactions. Press ▼ next to the **Category** field. A list of categories will be opened on the screen. Each category is marked as receipt or expenditure. At the end of the list, you will find the names of all your accounts, select the required one if you wish to create a transfer. At any time, you can change the list by creating new categories, editing the existing ones and deleting useless ones. For this purpose, select the [Categories](#) tab.



10.2.5 Project

Project allows you to classify groups of transactions spent on some purpose. Press ▼ next to the **Project** field and select the required project from the list. A window similar to the category window will be opened.

10.2.6 Contact

You may need to get details on any of the transactions some time after it has been performed (for example, to specify the cost of promotion materials). For such a purpose, you can set the **Contact**

attribute. To set it, you can either enter contact information into the **Contact** field or press ▾ next to this field and select contact information from the Outlook contact list.

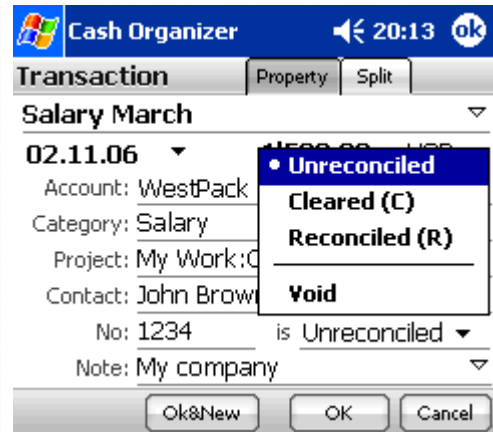
10.2.7 Number

You can assign a number attribute to the transaction. This can help you when viewing the transaction list as transactions can be arranged according to their number (for example, the check number, the time the transaction was entered or its importance). To assign a number to the transaction, move to the **No** field and enter the required number. Cash Organizer's autofill function generates a new number when you enter a similar transaction.

10.2.8 Mark

Marks are used when reconciling the balance of your electronic account with that of your real bank account using the account statement. To select a mark, press ▾ next to the mark field. There are three types of marks:

- ✓ **Unreconciled** – transactions that are not included in the bank account balance or haven't been reconciled to the bank account;
- ✕ **Cleared** – transactions that have cleared through the account but have not yet been reconciled on an account statement;
- ✕ **Reconciled** – group of transactions with a total balance equal to that of the account statement.



By default, all new transactions are marked as **Unreconciled**.

You can use **Void** instead of any of the marks. Transaction marked in this way will not affect the account balance.

■ **Note.** The transaction's mark can be changed by tapping on its symbol ✓ in the transaction list view.

10.2.9 Note

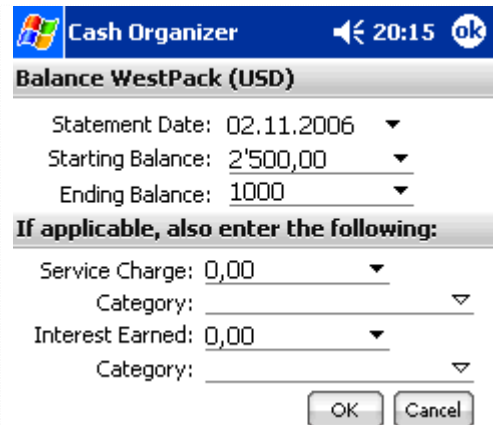
You can use the Note field to enter additional information about the transaction. You can enter your bank account number or more detailed information on the transaction's purpose, etc.

■ **Note.** To initiate a new transaction in Today screen, tap on **New** button and select **Cash Organizer**.

10.3 Account balance reconciliation

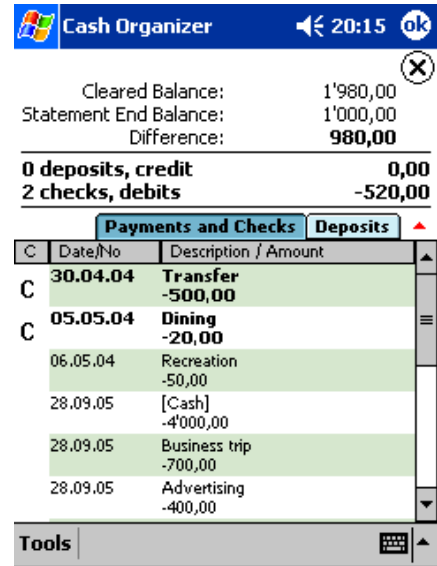
It is recommended that you periodically compare (once a month) the balance of your electronic account with your real bank account. To do this, you need your bank account statement. To start the reconciling process of your account balance, select the required account and open **Actions/Reconcile Account** menu.

First, you should set the key parameters of the reconciliation: date, starting and ending balances and, if required, service charge and interest earned in the appropriate fields. Use the data from your bank account statement. After you have finished, press **OK**.



Once you have set the parameters for account reconciliation, the balance reconciliation window will appear.

In the upper part of the window, you can see: the difference between the initial balances of the electronic and the real bank account (if the balances are equal, the line is absent), the cleared balance (starting balance and all the transactions marked as **Cleared**), the end balance, and the total difference. Then you will see information on the number of all receipt and expenditure transactions marked as **Cleared** and their total amount as well as lists of all the receipt and expenditure transactions for this account marked as **Unreconciled** or **Cleared**.



When reconciling the balance, click the "C" field for all transactions coinciding with the bank statement and they will be marked as **Cleared**. Make any appropriate changes in the amounts of the reconciled balances, balance disparities, number and amounts of receipt and expenditure operations.

On having reconciled the entire statement, you should get zero disparity between the balances. In this case, the balance reconciliation may be successfully finished by pressing **OK**.

All transactions marked during the balance reconciliation will be turned into **Reconciled** ones, unmarked ones will remain as **Unreconciled**.

Sometimes, for various reasons, the balance of your electronic account does not coincide with the bank statement (for example, you forgot to enter one of the transactions). In this case, if you press **OK**, the program will notify you that your balance does not coincide with the bank statement and the program will offer two solutions: you can either continue reconciliation or finish the procedure by entering a new transaction for the amount equal to the difference between balances. If you agree to enter such a transaction, all of the ones marked during the process of reconciliation as well as the new transaction will be marked as **Reconciled**. During the next reconciliation, transactions marked as **Reconciled** will not be included in the transaction lists.

Note. In the event you cannot reconcile the account in one session, you can interrupt reconciliation by pressing . Any transactions which have been marked up to that moment, will be marked as "Cleared" . To continue the reconciliation, select the appropriate command from the menu; reconciled transactions will be marked in the list.

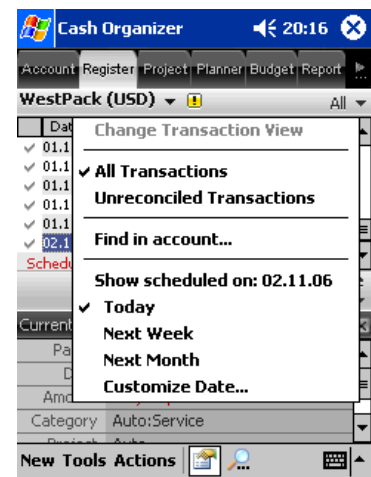
10.4 Transaction filter

Cash Organizer allows to filter transactions in two ways:

1. By reconcile transaction state – you can hide reconciled and cleared transactions;
2. By custom filter – you can perform a search, only transactions matching the search criteria will appear in the list.

To start a search, press button or select **Find in account** menu item. To cancel any filtration, select the **All transactions** menu item.

This menu allows changing scheduled transaction data range presentation as well.



10.5 Delete old transactions

As time passes, the transaction list will gradually grow. At some point it may become too long as most of the old transactions are reconciled with bank account statements and will not be changed again. You can shorten the list of transactions by deleting old transactions from it. For this purpose, select **Actions/Delete Old Transactions** from the menu.

Select a period at which any transactions older than it should be deleted - you can choose between the offered periods. Mark the checkboxes of the transactions you want to delete and press **OK**. After deletion, one transaction, named **Balance after deleting** for the amount equal to the total balance of the

deleted transactions will be entered in place of the old transactions. As a result, you may have three transactions marked as **Unreconciled**, **Cleared** and **Reconciled** respectively.

Note. When deleting old transactions, you will lose any information on categories, projects, contacts and other attributes for each of the transactions. If this information is important to you, you may decide to avoid performing this operation.



10.6 Account group configuration

This function allows bundling account groups (for example your bank account and related credit cards) and fast switching between them.

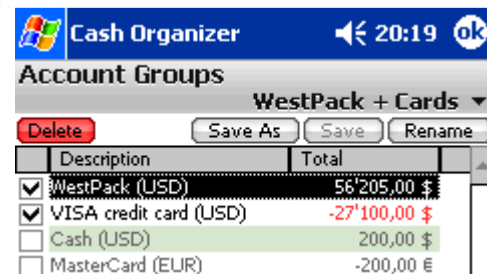
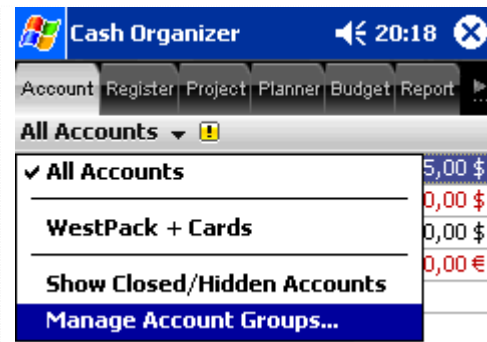
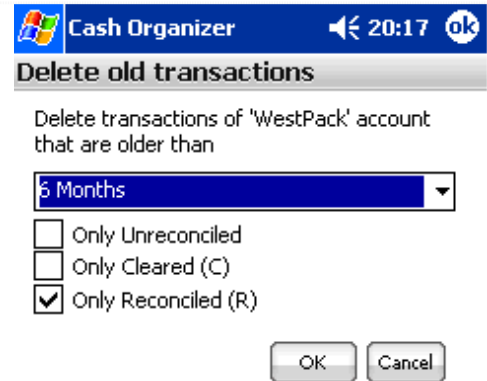
To configure an account group, select the **All Accounts/Config Account Group** menu item.

Mark or clear checkboxes next to account names, press the **Save As** button to save the selection as a group and type its name.

This mode allows deleting, renaming and saving changes in account groups too.

Note. The  and  buttons establish the order of accounts in the Account Center list. Highlight an account and press the button to change its position.

Actions menu available in this mode:



Edit...	
Duplicate	
Delete	
<hr/>	
Move to Account...	
Add to Planner...	
<input checked="" type="checkbox"/> Included in Budget	
<hr/>	
Import and Export ▶	
<hr/>	
Edit Account...	
<hr/>	
Reconcile Account...	
Delete Old transactions...	
Actions	

- Edit selected transaction;
- Delete selected transaction;
- Duplicate selected transaction;
- Move selected transaction to another account;
- Creates scheduled transaction based on the selected one;
- Excludes/Includes selected transaction in budget;
- Opens data import window;
- Opens data export window;
- Opens account properties;
- Opens account reconciliation window;
- Opens the tool for deleting old transactions.

11 Project center

Projects allow you to classify your financial operations by types of activity, which helps you obtain more detailed information on the distribution of your receipts and expenses. Using projects enables you to evaluate deals, profitability of your affiliates or your activity domains, business trip results and so on.

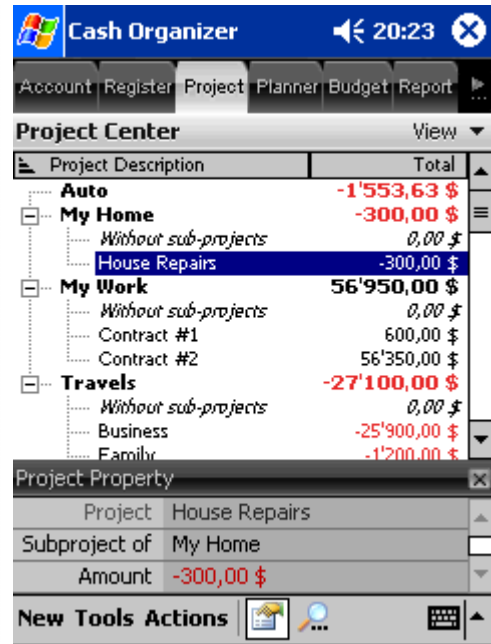
Examples of projects:

- Contract # 15
- Trip to New York
- Deal with X company

To get even more detailed information, you can enter several subprojects inside each of the projects. For instance, "Business Trips" project can contain subprojects corresponding to different trips: "London, February 2006", "New York 2006" etc.

In this chapter you'll learn the basic principles of working in the project mode:

- [How to create, edit and delete projects;](#)
- [How to view the current balance of the project;](#)
- [How to predict the project balance changes.](#)



11.1 Create, edit and delete projects

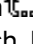

To create a new project, press **New** or select the **Actions/New Project** menu item. The following window will be opened. Enter the project's name into the **Name** field. If required, specify for which of the existing projects the new one will be a subproject (use the ▾ button to open a drop-down list). If there is no text in the **Subproject of** field, the project will be independent of the others.

To edit an existing project, highlight it and select the **Actions/Edit Project** menu item. A similar window will be opened. Make your changes and save them by pressing the **OK** button.

To delete a project, highlight it and select the **Actions/Delete Project** menu item. The confirmation window will be opened. You may reassign transactions of a project that is being deleted to another project (select it from the drop-down list) or leave them unassigned.

- Choose **OK** to delete a project;
- Choose **Cancel** if you want to cancel deletion.

11.2 View current balance of the project

The current balance of the project is the total amount of all related transactions. Highlight the required project and select the **Actions/View Transactions** menu item. You can view the balance in the same way as in the account mode using the balance field. You can switch between the subproject's balance and the balance of the principal project views by double clicking the upper line in transaction list (marked with ). In the principal project list, there is a line that contains each subproject's name and its balance (such lines are marked with ). The balance of the principal project is calculated by summing up the balances of all the subprojects and transactions related to the principal project. You can switch from viewing the balance of the principal project to viewing the balance of the subproject by clicking twice on the subproject's line. To cancel filtration by projects, select **All transactions** item from transaction filter menu.

12 Planning center

There are some differences between scheduled transactions and registered ones:

1. A scheduled transaction can't be completely guaranteed. You can only expect its performance with a certain probability on selected date. It can actually be performed at another time, performed partially or not performed at all;
2. Scheduled transaction can be either single or repeating.

In the transaction lists of accounts and projects, scheduled transactions are marked with red font. In the account mode, scheduled transactions of the current account are in bold type. Scheduled transactions related to other accounts are in regular type (they are shown on the screen in accordance with the program settings). In the project mode, only scheduled transactions related to the current project are visible.

From this chapter, you will learn the general principles of financial scheduling in the Planning Center mode:

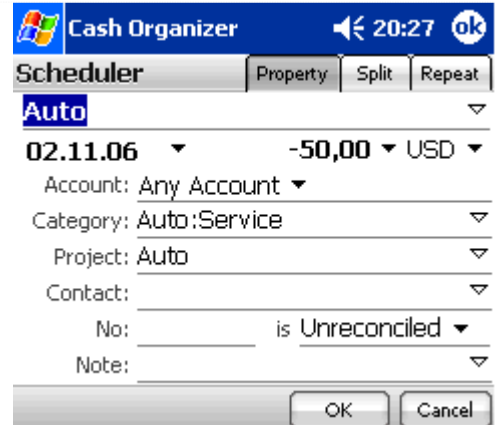
- [How to create a scheduled transaction;](#)
- [How to create a scheduled repeating transaction;](#)
- [How to group scheduled transactions;](#)
- [How to use templates;](#)
- [How to make the program remind you of scheduled transactions;](#)

- [How to forecast;](#)
- [How to deactivate a scheduled transaction;](#)
- [How to register a scheduled transaction in parts.](#)

12.1 Create scheduled transaction

A scheduled single transaction is a transaction which will be performed only once (for example, you are planning to buy a new computer for your office in a month). To set a scheduled single transaction, switch to the Planning Center mode and press **New**. Then adjust the attributes of the scheduled transaction, which are similar to the attributes of the current transaction.

After you have adjusted all the attributes, press **OK**.



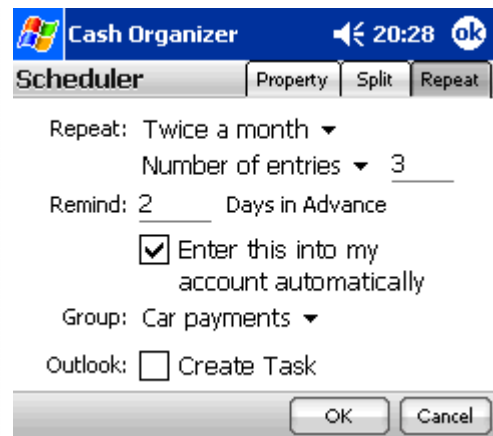
12.2 Create scheduled repeating transaction

Repeating transactions take place at certain regular intervals (for example, you pay for your Internet Service every month). To set a scheduled repeating transaction, switch to the planning mode and press **New**. Set all the attributes as you would for a single scheduled transaction. Then select **Repeat** tab.

Specify the periodicity of the scheduled transaction in the **Repeat** field. Press ▾ in the upper line and select one of the variants of the scheduled transaction's periodicity from the menu.

Then specify in the next line if the scheduled transaction should be entered repeatedly (**Ongoing entry**) or it has finite number of entries (**Number of entries**).

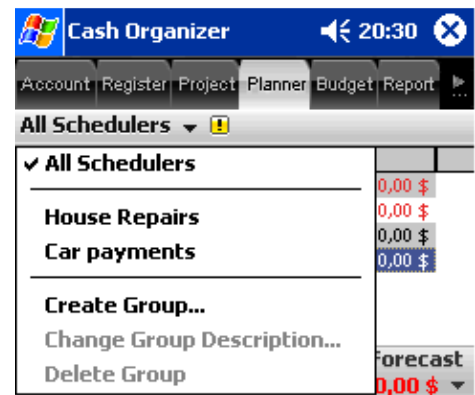
For example, your salary payment is a scheduled transaction that can be performed without an end but a loan payment is a scheduled transaction limited to a certain number of payments. When selecting **Number of entries**, specify how many times the scheduled transaction is supposed to be entered. After you have finished press **OK** button.



12.3 Scheduled transaction groups

This function makes navigation easier and allows forecasting for specific groups of scheduled transactions. For example, you can separate business and private transactions based upon the transactions' purpose.

To create a new group, select the **Actions/Create Group** menu item and type its name. Scheduled transactions could be assigned to a group during registering (**Repeat** tab) or you can highlight a transaction in the list and use the tap&hold technique to open a pop-up menu.



When a group is selected, only its transactions appear in the list and forecasting is available for that group only. Select **All Schedulers** to return to all transactions list.

Note. The **Delete Group** function does not delete transactions in selected group, but makes them unassigned.

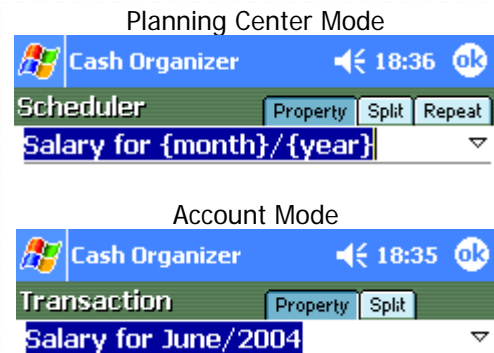
12.4 Template usage in the transaction's note

When setting repeating transactions, you may often need to specify dates that the scheduled transaction relates to. For example, if you set your salary receipt as a scheduled transaction, it would be useful to refer in the transaction name to the period for which it's paid. ("Salary for January", "Salary for February" etc.). To make the program specify a period in the transaction's note, you should give the program instructions in the form of keywords (templates). You can use the following keywords:

- **{year}** – current year,
- **{month}** – current month,
- **{week}** – number of the current week,
- **{date}** – current date,
- **{day}** – current day.

When typing keywords in the name of transaction, use the braces.

For example, if you want the program to automatically input the name of the current month and year in the name of a salary receipt transaction, set the transaction's name as: **Salary for {month}/{year}**. The program will automatically add the current month and year into the transaction's name. For example, the transaction dated with May 15, 2006 will have the name **Salary for May/2006**. It is important to remember that the values of the day, date, week, month or year relate to the date for which the transaction is scheduled and not to the date when transaction is set. For example, in January 2007 the mentioned transaction will be shown as **Salary for January/2007**, even if it was set in 2006.



You can perform arithmetic operations of addition and subtraction with the keywords. These operations should be indicated inside the braces after the keyword: **{date+1}**, **{month-2}** etc. For example, if you pay rent for your office for the previous month, you can set the name as **Lease {month-1}/{year}** for this scheduled transaction. In June 2006, the transaction will be named **Lease May/2006** and in January 2007 it will be **Lease December/2006**. If you need to specify several different terms in the transaction's name, use separate braces for each term. For example, you would like to set a transaction for the payment of Internet Service for three previous months and show in the transaction the names of the first and the last months. Set the transaction name to: **Internet {{month-3}/{year}}-{{month-1}/{year}}**. Note that month and year related to the first month are in separate braces as well as the month and year related to the last month. Then the transaction dated with July 2006 will be indicated as **Internet April/2006-June/2006**.

Note. If you do not use additional braces, all the arithmetic operations with the same parameter will be summed up, and the name will use a value of the parameter obtained as the result of summation. For example, if you set the name of the above transaction as **Internet {month-3}/{year}-{month-1}/{year}**, two arithmetic operations ("-3" and "-1") will be performed for the parameter. As a result, in July 2007 the name of the transaction will be: **Internet March/2006-March/2006**.

Note. This feature works for **Note** field only.

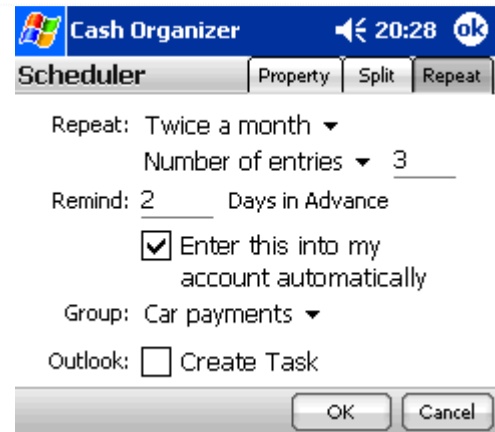
12.5 Scheduled transaction reminder

Sometimes you may wish to have the program remind you of upcoming scheduled transactions. This will allow you to not forget about expected receipts and expenditures and plan your financial activity accordingly. You may select how many days in advance you should be notified of the scheduled transaction and if it should be entered into the account automatically. For this purpose, select **Repeat** tab when creating the scheduled transaction.


Enter into the **Remind** field for how many days in advance you would like to get a reminder of the scheduled transaction. Mark the **Enter this into my account automatically** if you want the scheduled transaction to be entered at the specified date automatically.

Each time you run the program, you will see a message containing the list of all the scheduled transaction for which the reminder is required. In the account and project modes transactions lists all the scheduled transactions for which the reminder is required will be listed (they are marked with a grey font and followed with).

Additionally you may mark the Create Appointment checkbox to create an appointment in Outlook database, it will be based on Cash Organizer transaction properties including periodicity.






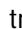




12.6 Prognosis of scheduled transactions

When analyzing financial operations, prognosis of all the receipts and expenditures by any specified date is a very important step. In the planning mode, you can evaluate the amount of planned receipts and expenditures for all the transactions scheduled irrespective of which account or project they relate to. To get a prognosis based on scheduled transactions, switch to the planning mode, enter the **Forecast** date and press  (this flag will not appear if there are no scheduled transactions due up to the selected date). You'll see a table containing information on the amount of the scheduled receipts and expenditures:

- **All Scheduled Transactions** or scheduled transaction group;
- **Scheduled** – forecasting date;
- **Amount** – the amount of all scheduled receipts and expenditures;
- **By Accounts, By Categories, By Projects and By Contacts** – information on distribution of the scheduled receipts and expenditures.

<p>All Scheduled Transactions <i>Scheduled 02/06/04</i></p> <hr/> <p>Amount: \$900.00</p> <hr/> <p>By Accounts WestPack (USD): \$1,000.00 Cash (USD): -\$100.00</p> <hr/> <p>By Categories Auto:Service: -\$100.00 Salary: \$1,000.00</p> <hr/> <p>By Projects Auto: -\$100.00 My Work:Contract #123: \$1,000.00</p> <hr/> <p>By Contacts John Brown: \$1,000.00</p>
--

12.7 Inactive scheduled transactions

By default all scheduled transactions are created as active ones, i.e. when they come due they are entered into the transaction list and have effect on the planned balance. Single scheduled transactions in the planning mode are marked with , and repeating scheduled transactions with . If due to some reasons, you want to place a scheduled transaction into an inactive state, click  or  next to the transaction. The transaction will become inactive and will be marked with . If you want to make the scheduled transaction active again, click ; it will be changed with  or .

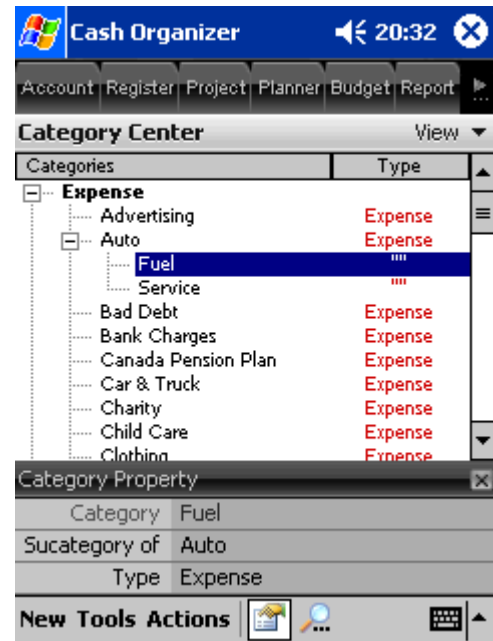
12.8 Partial performance of scheduled transaction

Sometimes a scheduled transaction can be performed in several parts. For example, you set a scheduled transaction for your salary receipt but then decided to get some money in advance. In this case, you may need to perform the transaction in parts, with another amount. Switch to the account or project mode and click the transaction being partially performed. Change the transaction's amount and other attributes of the transaction (if required) and press **OK**. The transaction for the specified amount will appear in the list of the registered transactions. In the list of the scheduled transaction, there will remain a transaction for the amount equal to difference between the scheduled amount and the actual amount of the performed transaction.

13 Category center

Categories allow sorting your income and expenses into meaningful groups. The program contains a default list of categories you can use for classification of your transactions. You can create your own categories and delete unneeded ones.

Like projects, categories can contain subcategories. Usage of subcategories allows dividing major categories into less significant ones. For example, "Car" category can contain such subcategories as "Service", "Petrol", "Repair", etc.



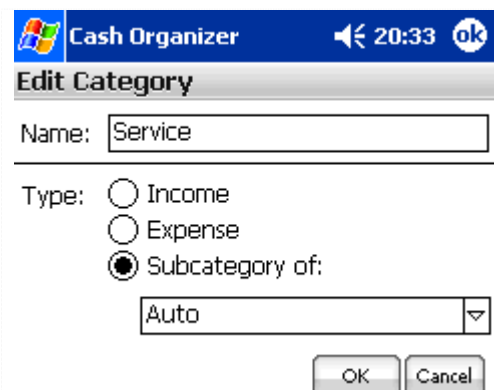
13.1 Create and edit category

To create, edit and delete categories select **Category** tab.

To create a new category, press **New** or select the **Actions/New Category** menu item. The following window will be opened.

Enter the category's name into the **Name** field. If required, specify for which of the existing category the new one will be a subcategory (use the ▾ button). If there is no text in the **Subcategory of** field, the category is independent of the others.

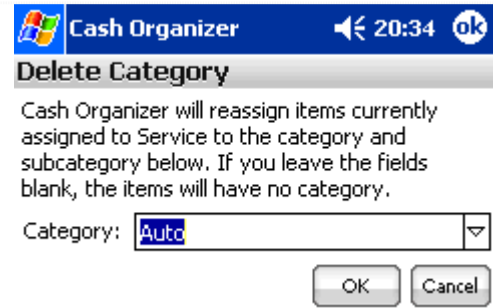
To edit an existing category, highlight it and select the **Actions/Edit Category** menu item. A similar window will be opened, make your changes and save them by pressing **OK** button.



13.2 Delete category

To delete a category, highlight it and select the **Actions/Delete Category** menu item. The confirmation window will be opened. You may reassign transactions of a category that is being deleted to another category (select it from the drop-down list) or leave them unassigned.

- Choose **OK** to delete a category;
- Choose **Cancel** if you want to cancel deletion.



14 Budget center

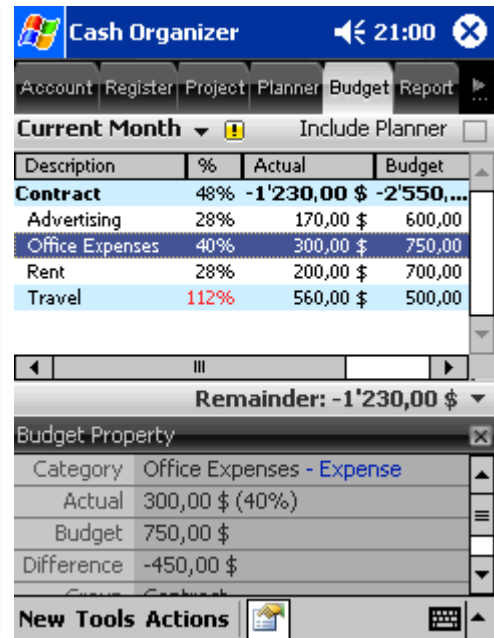
This chapter will help you to get practical skills for corporate finance as well as your private finance management. You will learn:

- [How to plan your budget using Cash Organizer;](#)
- [How to create new budget group;](#)
- [How to add categories to group;](#)
- [How to remove categories from group;](#)
- [How to rename budget group or change assigned project;](#)
- [How to delete budget group;](#)
- [How to set category limits;](#)
- [How to set a date range for budget planning;](#)
- [How to view the results;](#)
- [How to exclude transactions from the budget;](#)
- [How to create a transaction report;](#)
- [How to set exceeded limits notifications.](#)

14.1 General principles

Budget planning is the main task of financial activity. A budget, planned correctly, will let you know exactly how much money is at your disposal and how much you can spend for certain purposes – for purchasing of new equipment for your company, to repair your house and so on. Select the categories, receipts, expenditures that you are going to include in your budget and evaluate the approximate amount of receipts and expenditures for each of the categories. You can plan you budget by presenting it in the form of a table.

When analyzing the budget, it is very important to compare the planned receipts and expenditures with actual ones. That is why there are four figures in the category's line, which allow evaluation of your budget efficiency: actual balance, planned balance, difference between them and percent of consumption. You are supposed to enter values of the planned budget only; the actual balance and the difference will be calculated based on the actual receipts and expenditures.



14.2 Create new budget group

To create a new budget group, press **New** or select the **Actions/New Budget Group** menu item. The following window will be opened. Enter the budget's name into the **Name** field, select budget group type and press **OK** to save it.

To edit an existing budget, highlight it first and select the **Actions/Edit Budget Group Description** menu item. A similar window will be opened, make your changes and save them by pressing the **OK** button.

14.3 Add new category to the budget

After creating a new budget, you should insert some categories into it. To add new categories, highlight the required budget group and select the **Actions/Add/Del Categories to Group** menu item.

You will see the list of categories on the screen. Mark those you are going to include in the budget (or clear the marks next to those categories you are going to exclude). To make the process easier, use the **Actions** ▾ menu. You can mark all the receipt and expenditure categories and transfers at once or clear all subcategories. On having specified the categories to be included in the budget, press **OK**.

Note. Press the **Update** button each time it appears on the screen to recalculate your budget since the program does not do it automatically.

14.4 Delete category from the budget

If you want to delete a category from the budget, highlight its name and select the **Actions/Delete Category from Group** menu item.

14.5 Rename budget

If, for some reason, you wish to change the name of an existing budget, highlight it and open the **Actions/Edit Budget Group Description** menu item. You will see a window similar to that for a new budget creation. Make changes and press **OK**.

14.6 Delete the budget group

To delete a budget, highlight it and open the **Actions/Delete Budget Group** menu item. You will see a warning message; select **Yes** to delete the budget or **No** to cancel deletion.

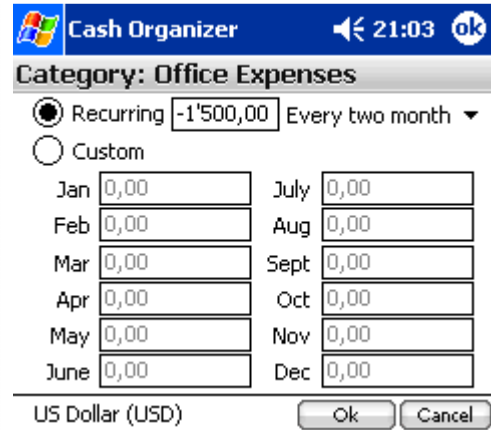
14.7 Set the category limits

Setting limits for receipts and expenditures for each of the categories is one of the most important steps in the budget planning. The total limit of the budget is the total amount of receipts and expenditures of all categories assigned to that budget. To set limits for receipts or expenditures by category, highlight a budget category and open the **Actions/Edit Category Limit** menu item.

You can set two types of the receipts and expenditures limits in the budget: constant value of the receipts (expenditures) per month or different values for different months.

To set constant value of the expenditures (receipts) per month select **Recurring Limit** and enter the fixed amount in the monthly budget (in the currency units by default). The program will automatically recognize if this amount is for receipts or expenditures based upon the category's description.

To set different values of expenditures for each month select the **Custom Limit** and enter amounts next to the name of each month.



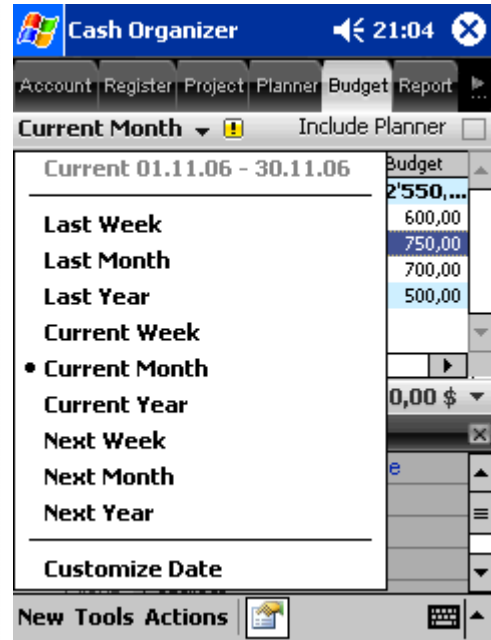
After you have set the limits for the receipts (expenditures), press **OK**.

14.8 Set a date range for budget planning

When you have set your receipt and expenditure limits in the budget, it is time to set the interval for budget planning. Tap on **Period** and select required date range from the list. If you wish to set a custom period, select **Customize Date** and specify the starting and ending dates in the **From** and **To** fields or tap on the button to select a predefined period.

You can include scheduled transactions into your budget by selecting the **Include Planner** option. Categories that you have assigned scheduled transactions to will be marked with "+" next to its name.

To recalculate the budget, press button.



14.9 View the results

After you have set the budgets and their terms, you can return to viewing the results. In the budget list, you can see information on each of the groups as well as on each of the categories fixed in the budget. Names of categories where actual expenditures exceed planned ones are marked with red font. Pay attention to those categories and adjust your financial activities.

By pressing the **Remainder** amount, you will get detailed information including total planned amounts for income and expense groups and the percentage.

Budget Center	
01.11.06 - 30.11.06	
Total Income:	2'000,00 \$ (90%)
Scheduled Transactions Included:	1'000,00 \$
Total Expense:	-2'630,00 \$ (103%)
Scheduled Transactions Included:	-1'400,00 \$
Total Budgeted:	-350,00 \$

14.10 Exclude transactions from the budget


Sometimes you may need to exclude a transaction from the budget, despite the fact that the category the transaction relates to, is included in the budget. In the register or project mode highlight that transaction to be excluded from your budget, use tap&hold technique to open a pop-up menu and select **Exclude from**

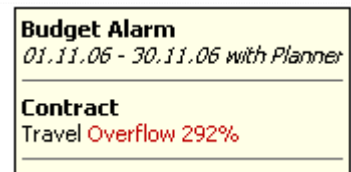
Budget. To include that transaction in budget again, repeat the steps above, but select **Include in Budget**.

14.11 Budget transactions report

To see all transactions assigned to a group or single category, highlight its name and select the **Actions/Show Transactions** menu item. A transaction report will be created. For more information on the report presentation form and its further processing, please see the [Report Center](#) section.

14.12 Notification of a budget limit exceeding

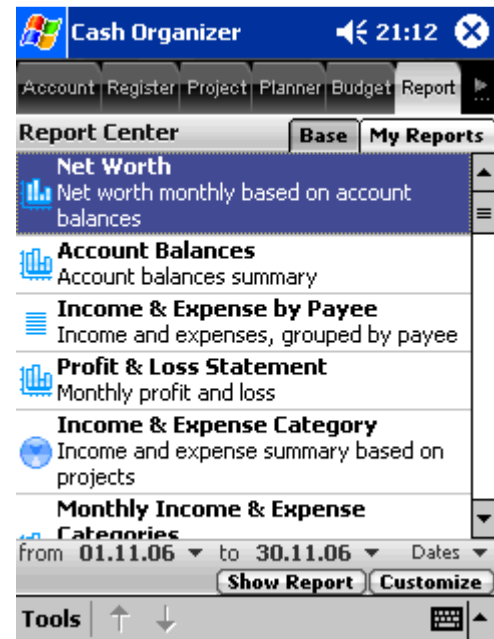
The program will automatically notify you in any mode if a budget limit is exceeded in one of the categories after you have registered a new transaction. You will see a message of the budget limit exceeded including the name of the corresponding category. Getting such information will enable you to make quick decisions on your finance management. This icon  in Budget Center notifies you of budget limit exceeded. Tap on it to get detailed information.



15 Report center

In the domain of finance, it is often necessary to make a report. Such a report, when made correctly, allows the retrieving the required information in an easy to understand form. From this chapter you will learn:

- [How to make financial reports;](#)
- [How to adjust a filter;](#)
- [How to choose the report presentation form;](#)
- [How to get detailed information on the report just produced;](#)
- [How to save the report;](#)
- [How to transfer data into other programs;](#)
- [How to save time with My Reports mode;](#)
- [How to print out a report.](#)




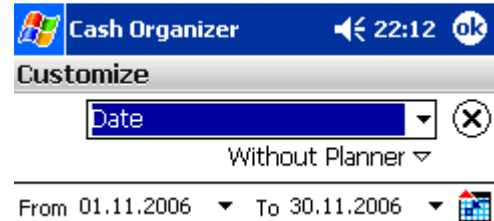
15.1 Reporting

To make a report, select the **Report** tab. You will see a list of predefined forms and several buttons for adjusting settings of the report. Select a form, date range and press **Show Report** button. The report will appear on the screen.

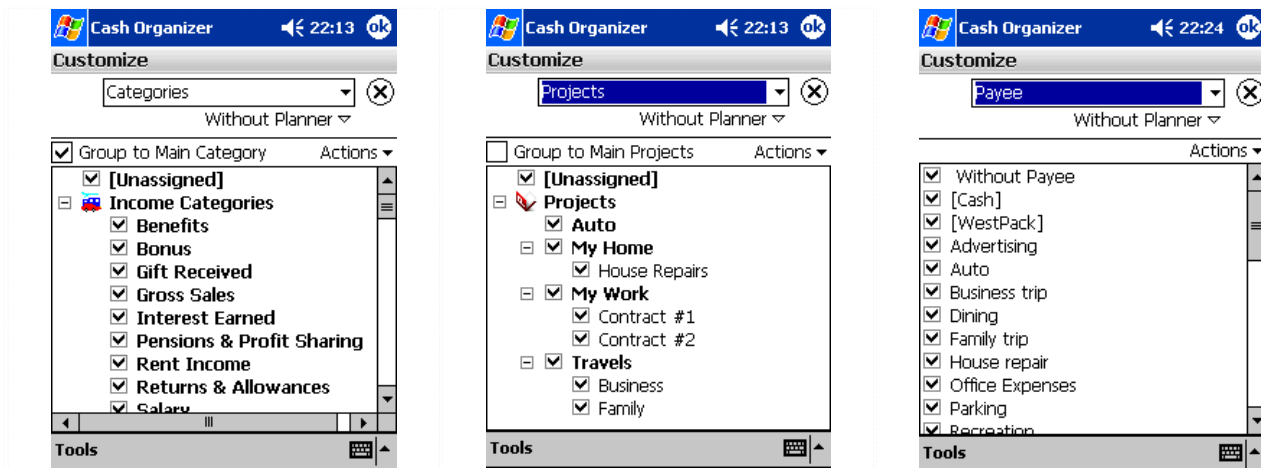
15.2 Adjusting filter

Usage of a filter allows determining what transactions are to be considered while making a report. To adjust a filter, press the **Customize** button. You will see a window that allows adjusting parameters of the filter. Select a filter group from the drop-down list:

Select **Date** to set a date range. You can set the dates using the built-in calendar or press the  button to select a predefined period.

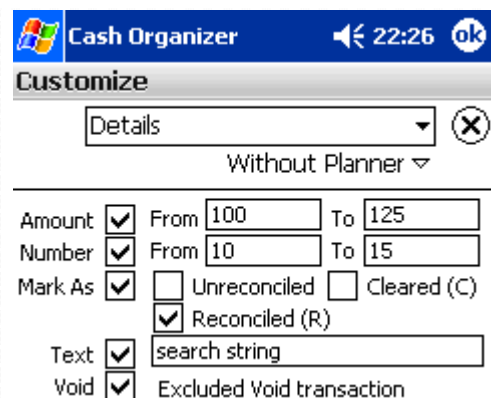


By selecting **Accounts**, **Categories**, **Projects** or **Payees**, you can indicate to what accounts, categories, projects and payees the transactions to be used in the report are related. **Group to Main Category/Projects** function allows to hide sub-categories and sub-projects on graphic reports, main categories and projects show total sum.



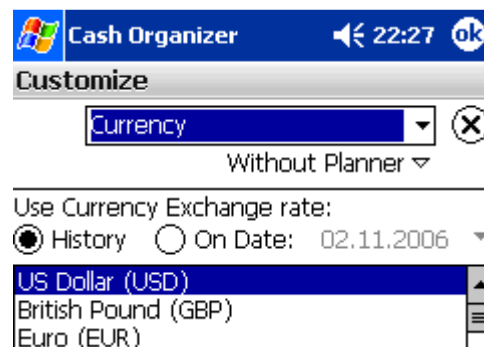
By selecting **Details**, you can indicate some details for the report's presentation:

- **Amount** - amount of the transactions to be considered while making the report;
- **Number** – which transaction numbers to be considered while making the report;
- **Mark As** - marks of the transactions to be considered in the report;
- **Text** - inclusion of transactions containing the mentioned text into the report;
- **Void** - if you marked this option, voided transactions will not be included into report.



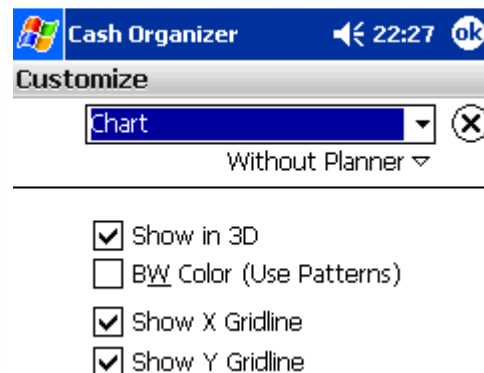
By selecting **Currency**, you may indicate the currency into which all the amounts should be converted while making the report. Choose the exchange rate for report:

- **History** - all transactions will be converted with different rates, corresponding to each transaction exchange rate from currency history;
- **On Date** - all transactions will be converted with the same exchange rate corresponding to selected date from currency history.



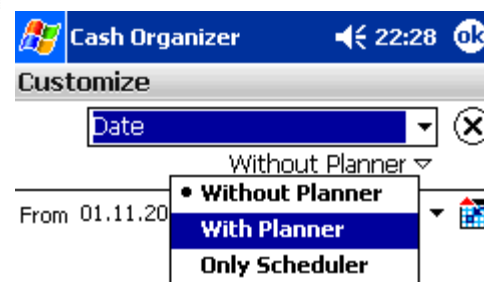
By selecting **Chart**, you can change some details of the report's presentation:

- **Show in 3D** - three-dimensional image (for pie or bar graphs);
- **BW Color (Use Patterns)** – usage of black and white colors and various types of hatching (if this function hasn't been set, color palette will be used);
- **Show X Gridline, Show Y Gridline** – show horizontal (X) and vertical (Y) axes on the graph.

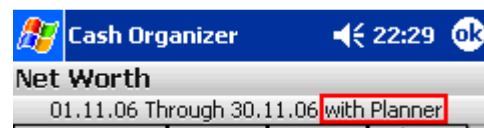


Cash Organizer allows you to create various types of report, select an option:

- **Without Scheduler** to create a report based on registered transactions;
- **With Scheduler** to create a report based on registered and scheduled transactions;
- **Only Scheduler** to create a report based on scheduled transactions only.



If scheduled transactions are included into report, Cash Organizer will mark them with a different color and italic font in the list and **with Scheduler** will appear in the header.

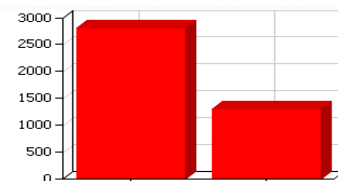


Note. To cancel the filter parameters, use **Tools/Reset Filter** menu. The program's default filter settings will be restored.

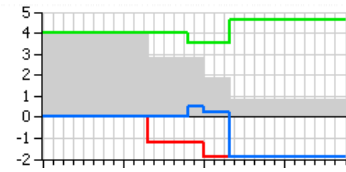
15.3 Selecting the report's form

Depending on what information is supposed to be presented in your report, you can select one of the report's forms.

Net Worth is a net value report (financial term that means a total sum of all receipts, expenditures and the initial balance). Such a report allows you to follow changes of liquid value of your company etc. Usually it is presented in the form of a bar graph.



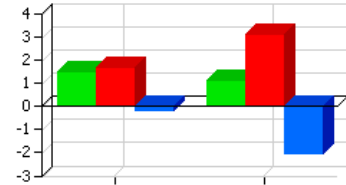
Account Balances – this kind of report allows showing balance dynamics for each of the accounts selected by the filter and for all the accounts together.



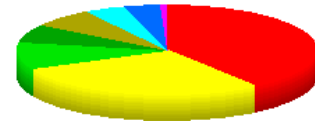
Income & Expense by Payee report is a comparison between receipt and expenditure values by payee.

Advertising	0,00 \$	-170,00 \$	-170,00 \$
Auto	0,00 \$	-50,00 \$	-50,00 \$
Dining	0,00 \$	-20,00 \$	-20,00 \$
Office Expenses	0,00 \$	-300,00 \$	-300,00 \$
Parking	0,00 \$	-5,00 \$	-5,00 \$
Recreation	0,00 \$	-50,00 \$	-50,00 \$
Rent	0,00 \$	-200,00 \$	-200,00 \$
Salary	1'000,00 \$	0,00 \$	1'000,00 \$

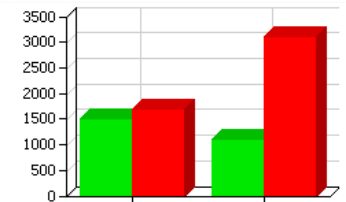
Profit and Loss Statement report is a comparison between receipt and expenditure values.



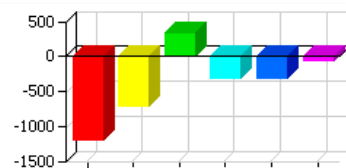
Income & Expense Category is a report showing the distribution of receipts and expenditures among the categories.



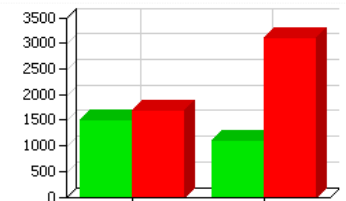
Monthly Income & Expense Categories is a report showing monthly ratio of receipts and expenditures in all the categories selected by the filter.



Project Report is a report showing distribution of receipts and expenditures between the projects.



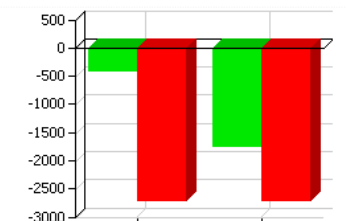
Monthly Project shows the ratio of receipts and expenditures in all the projects selected by the filter.



Transaction Report is a list including all the transactions selected by the filter.

<input checked="" type="checkbox"/>	03/05/04 House repair	-\$300,00
<input checked="" type="checkbox"/>	03/05/04 Business trip	-\$700,00
<input checked="" type="checkbox"/>	08/05/04 Salary for June,2004	\$1,000,00
<input checked="" type="checkbox"/>	08/05/04 Auto	-\$50,00
<input checked="" type="checkbox"/>	08/05/04 Salary for June,2004	\$100,00

Budget Monthly is a report showing the ratio of the scheduled and actual receipts and expenditures of the chosen budget.

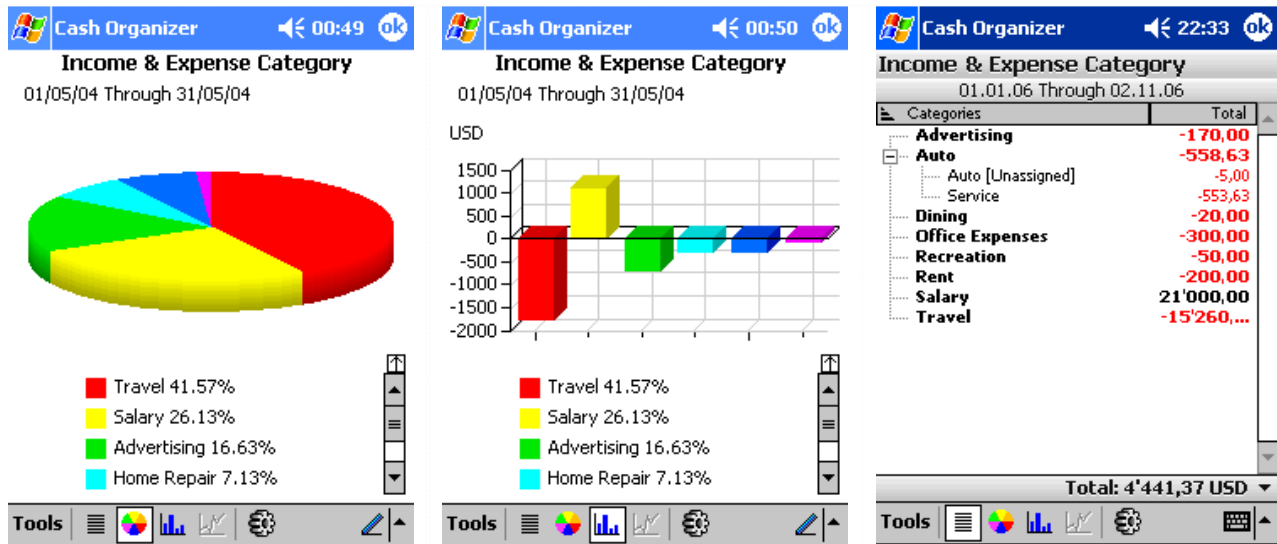


15.4 Process the report made

Processing of the report includes:

15.4.1 Presentation form for the report selection

Cash Organizer allows choosing between four forms of presentation for the reports: text report, pie graph, bar graph and line graph. Whichever form you prefer, each report type has one which is the most typical default form. However, you can select other presentation forms for most of the reports. See below examples of variety of presentation forms for the "Income & Expense Category" report.



You can select the required presentation form by clicking the corresponding icon in the menu bar:



See the table below to check what presentation forms can be used for each type of reports. Allowable forms are marked with "+", default presentation forms are marked with "++".

Type of reports	Presentation form			
Net Worth	+	+	++	+
Account Balances	+			++
Income & Expense by Payee	++			
Profit and Loss Statement	+		++	+
Income & Expense Category	++	+	+	
Monthly Income & Expense Categories	+		++	+
Project Report	+	++	+	
Monthly Project	+		++	+
Transaction Report	++			
Budget Monthly	+	+	++	+

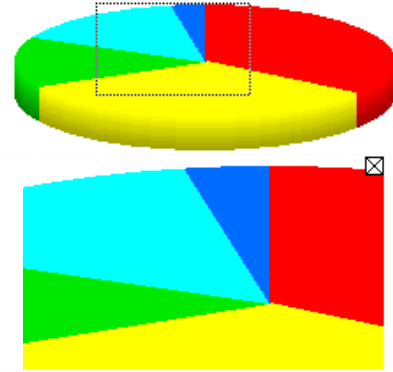
15.4.2 Changing filtration parameters

You may need to change the filtration parameters for a report which has already been produced. Select

Tools/Customize or press the button. You will see the same window as for filtration parameter adjusting. Change the required filtration settings and press **OK**. The report will be changed accordingly.

15.4.3 View small-sized elements

Graphic reports may contain some small-sized elements that are difficult to be seen in the default scale. You can view some parts of the bar, pie or line graph in more detail. For this purpose, select an area of the report to be viewed in the larger scale.



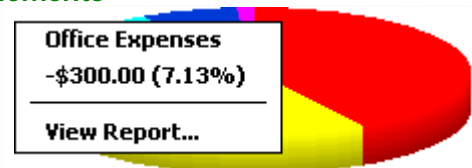
After that, the selected element will become of the size of the whole report. By pressing , you can return to the whole report again.

15.4.4 Open a legend completely or partially

Graphic reports are always accompanied by a legend explaining the meaning of each color used for the graph. When too many colors are used, the legend may be too big for the screen and only several upper lines of the screen can be seen. If there is no room on the screen to show the legend as a whole, use the scroll bar next to it. Moving the slider along it, you may view the whole legend. There is an icon above the scroll bar. By pressing it, you can open the whole legend on the screen (part of the screen containing the graph will become smaller). After opening of the legend on the screen, the icon appears above the legend (to the right). By pressing the icon, you can return to the initial presentation (complete image of the graph and partial presentation of the legend).

15.4.5 Getting detailed information on the report's elements

While viewing the graphic report, you may need detailed information on some elements of the report (for example, amount of receipts or expenditures of the category in the report like "Income & Expense Category", account balance for the selected date in the report "Account Balances" etc.).



You may get the required information by tapping on the corresponding element of the report. A context menu containing the required information will appear.

15.4.6 Create an auxiliary report

If necessary, you may get additional information on an element of the report not only in the form of a table, but also in the form of an auxiliary report. For such purpose, select the corresponding element of the graphic report and select the command **View Report** in the context menu. You may also create an auxiliary report by double clicking the element of the graphic report, which you are interested in. The type of the original report defines the type of the auxiliary report.

Type of the original report	Type of the auxiliary report
Net Worth	Account Balances
Account Balances	-
Income & Expense by Payee	Transaction Report
Profit and Loss Statement	Transaction Report
Income & Expense Category	Transaction Report
Monthly Income & Expense Categories	Income & Expense Category
Project Report	Transaction Report
Monthly Project	Project Report
Transaction Report	-
Budget Monthly	Transaction Report

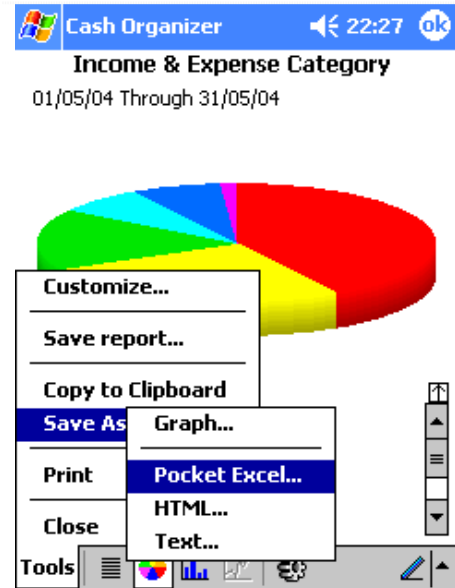
After you have viewed the auxiliary report, press **OK** to get back to the original report.

15.5 Save report to file

You can use your report in other programs: graphic editors, text processors, spreadsheets and HTML editors. For these purposes, you must save a report to file. When a report is created, select the **Tools/Save As** menu item and indicate the file type depending on how you're going to use it in the future:

- **Graph** if you're going to you the report as a graphic object;
- **Pocket Excel** to save the report in the form of an electronic worksheet;
- **HTML** if you're going to use the report for working in the Internet;
- **Text** to save the report as a text file.

Then type file's name, select its location and press **OK** to save the file.



15.6 Transfer data into other programs

Financial data (graphic and text) may be easily transferred directly into other application. To do this, create a report and switch to the required presentation. Select **Tools/Copy to Clipboard** and use the **Paste** function of the target application.

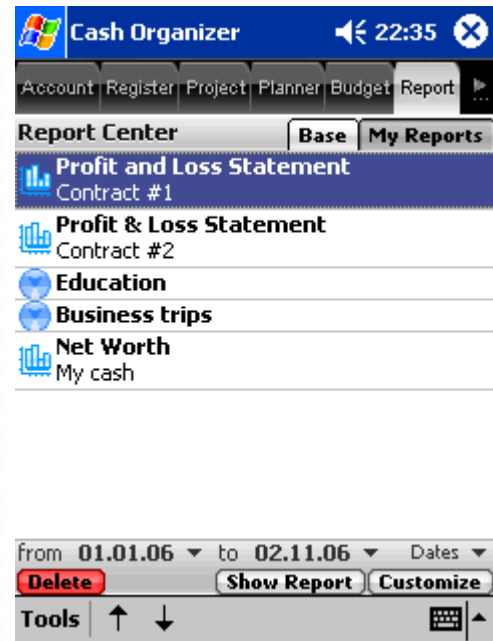
15.7 My Reports mode



My Reports mode allows saving often-used reports and its customized settings. For example, you can save different settings for the same report type and run it immediately, without the need to customize it first. This function saves all the settings except a date period and currency.

To save a report, create it first (you may use a previously saved report as a template) and use **Tools/Save Report** menu.

To change a saved report's filter, highlight it and press the **Customize** button. A report adjustment window will be opened, make the changes and press **OK**.

Delete button deletes the selected report.



Note. The  and  buttons establish the order of reports in the My Reports list. Highlight a report and press the button to change its position.

15.8 Printing

When a report is created, you may send a printout of it directly to a printer. To do that, select **Tools/Print and PDF** menu. For some reports, the possibility to choose columns to include/exclude from a printout is available. If this window appears on the screen, mark or clear the appropriate checkboxes and press **OK**.

The following settings are available in the next window:

- Printer selection;
- Communication port;
- Color or monochrome printing;
- Paper size;
- Orientation.

The **More** button allows modification of the following settings:

- Custom margins;
- Page range;
- Draft mode;
- Data compression.

Press **OK** to save the settings and close the window.

After you have adjusted all the parameters align the ports (if you use infrared connection) and press **OK** to start printing.

16 Payee center

Payee center allows to manage your payees and memorized transactions.

16.1 Create and edit payee

To create a new payee, press **New** or select the **Actions/New Payee** menu item. The following window will be opened.

Enter the payee's name into the **Payee** field. If required, enter a note. If you mark the Hidden check box, you will be able to hide such payees from the list.

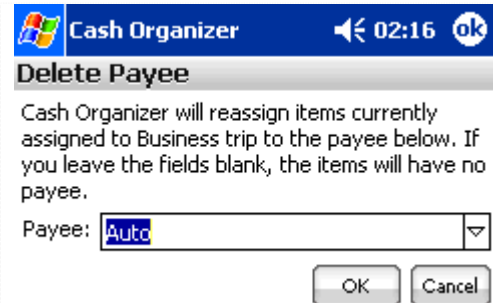
To edit an existing payee, highlight it and select the **Actions/Edit Payee** menu item. A similar window will be opened, make your changes and save them by pressing **OK** button.

Note. You do not have to create payees specially in this mode because they are being created automatically when you register new transactions.

16.2 Delete payee

To delete a category, highlight it and select the **Actions/Delete Payee** menu item. The confirmation window will be opened. You may reassign transactions of a payee that is being deleted to another payee (select it from the drop-down list).

- Choose **OK** to delete a payee;
- Choose **Cancel** if you want to cancel deletion.



16.3 Update memorized transactions

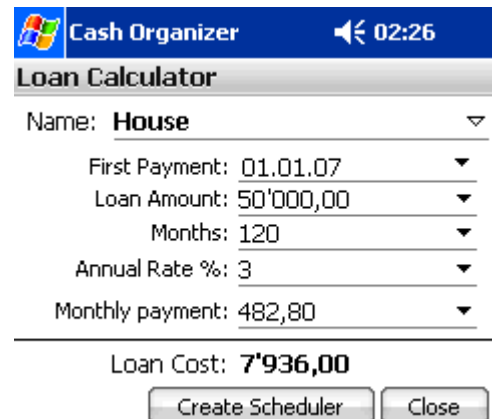
Memorized transactions are used when you register new transactions. When you select existing payee from the list, Cash Organizer automatically fills out all transaction settings you previously used. Because that data may lose actuality, you can update payees one by one in payee editing window or force the program to update all memorized transaction attributes with the data you used in the latest transactions using the **Actions/Update All Memorized** menu item.

17 Loan calculator

Loan calculator is a simple tool allowing you to calculate a credit, check its real cost and, if needed, save the result (including periodicity settings) as a scheduled transaction.



To launch the tool, select the **Tools/Loan Calculator** menu item and enter required information.

The **Loan Cost** is a difference between **Loan Amount** and total sum of all **Monthly Payments**.



18 Cash Organizer Express

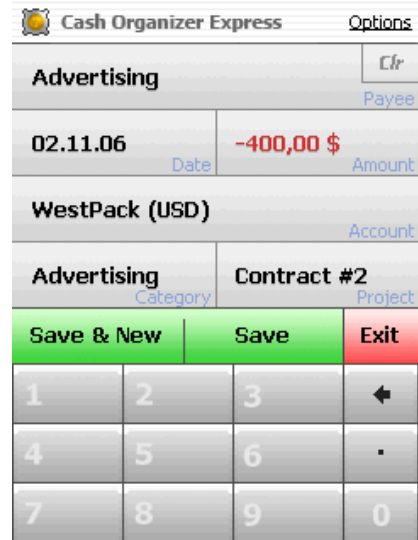
Cash Organizer Express enables fast transaction entering without a need to launch the main programs. To

launch the system, press the  button placed in Cash Organizer today section or  icon in the Programs menu. Additionally you can assign a hardware button to launch the Express in your mobile device **Settings -> Buttons**.

18.1 Entering transactions

When you start Cash Organizer Express, a payee selection window appears on the screen. Tap on needed payee item to copy all transaction details to the main window. You can change all transaction attributes by tapping on appropriate field. The numeric keyboard in this window works for Amount field.

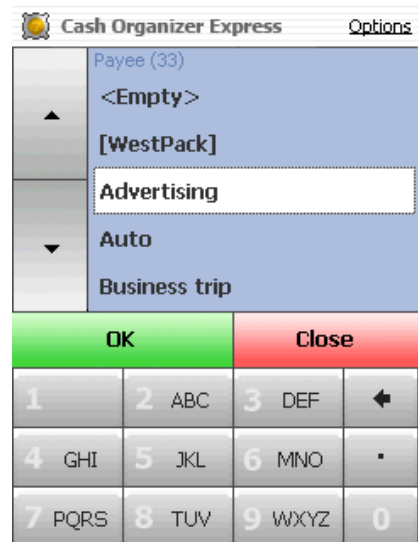
To register a transaction and close the Express, press **Save** button, **Save & New** registers transaction and creates a new one. To close Express without saving current transaction, press **Exit** button.



18.2 Express search

The search system in Cash Organizer Express works exactly like the T9 on your mobile phone. You do not have to press the ABC button three times to type letter C, but just once. Then you can press another button to input another, and if next letter is placed on the same button as a previous one, press that button once again. For example, if you need to find all payees containing OFFICE string, press the following buttons: **[6NMNO] [3DEF] [3DEF] [4GHI] [2ABC] [3DEF]**. As you can see, the **[3DEF]** button was pressed three times: twice to enter two F letters one by one and once to enter E.

As soon as you start typing, the search system starts filtering the payee list and removing records not matching your search criteria. Tap on a payee to copy its memorized details to main window, edit transaction details and register it. These rules work in all Cash Organizer Express windows.



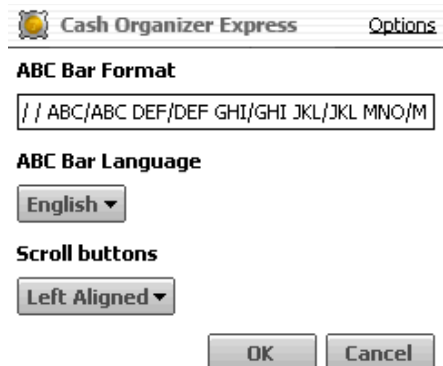
18.3 Express settings

Tap the **Options** link to access settings.

The **ABC Bar Format** settings allows to make the search system suitable for your language. You can select from pre-installed ones (English, Russian, English/Russian and German) or create your own. To **create** own bar, select **Custom** or existing one to add additional symbols and type in the edit line according to these rules:

1. ABC – tab name
2. / (slash) – separates tab name and search symbols ;
3. SPACE – separates tabs.

Your custom sting should look like this one:
// ABC/AABCĆ DEF/DEĚF... or



/ 123/1234567890 ABC/AABCĆ DEF/DEEF...

Additionally in the options window you may change scroll buttons positions.

When all adjustments are set, press **OK**.

19 Today plug-in

Cash Organizer's Today plug-in presents chosen by you information set and notifies of exceeded budgets and accounts balances limits. If your data file is password-protected, you will need to enter your password before you can access the details window.

To activate/deactivate the plug-in:

1. Select **Start / Settings / Today / Items**;
2. Mark or clear Cash Organizer's plug-in checkbox.

The screenshot shows the 'Inesoft Cash Organizer Today' window. At the top, there is a notification bar: '1 Budget and 1 Account alerts' with '1 scheduled' and a 'New' button. Below this is a Windows-style taskbar with 'Start', a clock showing '22:46', and a close button. The main window title is 'Inesoft Cash Organizer Today' with a 'Close' button. The content is divided into three sections:

- Accounts and Groups:**
 - WestPack + Cards: 28'175,00 USD
 - WestPack: 55'275,00 USD
 - VISA credit card: -27'100,00 USD
 - Cash: 200,00 USD
 - MasterCard: -200,00 EUR
- Budget:**
 - Travel: 112% -500,00 USD
 - Advertising: 28% -600,00 USD
 - Office Expenses: 40% -750,00 USD
 - Rent: 29% -700,00 USD
 - Salary: 45% 2'200,00 USD
- Scheduled:**
 - 28.09 Office Expenses: -300,00 USD

At the bottom of the window, there is a 'Customize Close' button.

20 Program settings

Before you start working with Cash Organizer, it is necessary to choose the program settings, i.e. main parameters of operation. To switch to the program settings, select **Tools/Options**. Then select the tab corresponding to the group of the program settings:

- [Currencies](#) – exchange rate settings and currency history;
- [Screen view](#) – screen view settings;
- [Today plug-in](#) – selecting items for Today plug-in;
- [Password](#) – settings of the program access password.

20.1 Screen view

To adjust screen view settings select the **View** tab.

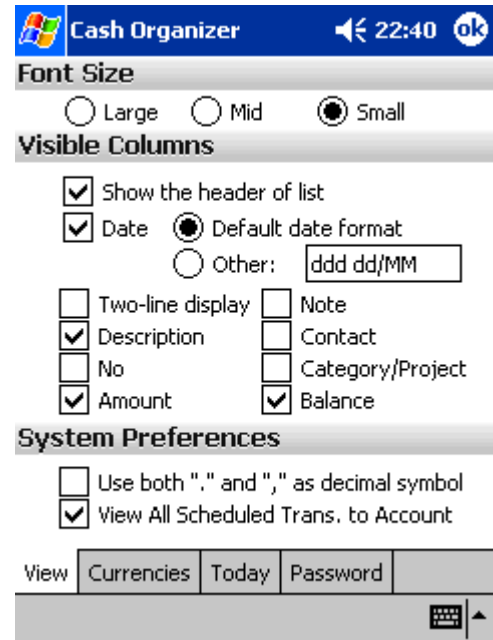
Select the font size in the transaction list; Large, Middle or Small font. The text of the list will be of the selected size:

- **Large** font 04/29 Same extra money -500.00
(uses Clear Type™)
- **Mid** font 04/29 Same extra money -500.00
- **Small** font 04/29 Same extra money -500.00

To show the columns headers of the transaction list on the screen, select Show the header of list.

Also in the Visible columns section, mark the checkboxes next to columns to be shown in the transaction list:

- **Date** – date of the transaction;
- **Two-line display** – displays all transaction properties (except Note and Contact) in two-line table;
- **Description** – name of the transaction;
- **No** – number of the transaction;
- **Amount** – amount of the transaction;
- **Balance** – balance of the account considering all the preceding transactions;
- **Note** – user's notes;
- **Contact** – contacts concerning the transaction;
- **Category/Project** – category and project of the transaction.



By selecting the function **Use both "." and "," as decimal symbol** you'll be able to enter the amount of the transaction using both "." and ",". If you haven't selected the function the computer will only correctly recognize ",". This means that "." will be ignored (for instance, "7.00" will be recognized as "700").

By selecting **View All Scheduled Trans. to Account**, you will be able to view in the account mode all the scheduled transactions. If you have not selected the function, only scheduled transactions related to the current account will be shown in the list.

20.2 Currencies

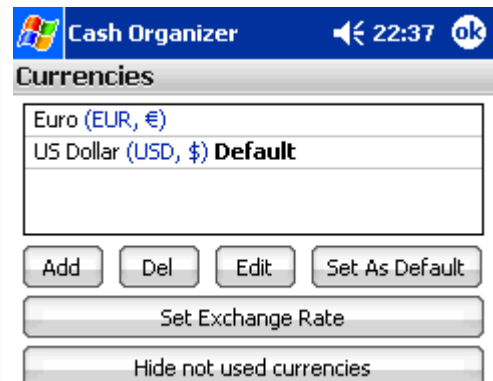
To add a new currency to the list, press the **Add** button. A list of currencies that can be used by the program will appear on the screen. Select the required one and press **OK**.

To delete a currency from the list, select it and press **Del**. To avoid accidental deletion of the currency from the list, the program will ask for your confirmation.

The **Edit** button allows changing a symbol that will represent the currency in the transaction list.

To select a default currency, highlight it and press **Set As Default** button.

Hide not used currencies – removes (not deletes from database) currencies from the list that you do not use in your database.



Every time you enter a new transfer between accounts using different currencies, Cash Organizer automatically opens an exchange rate confirmation window and saves those values in the exchange rate history table. Press the **Set Exchange Rate** button to open it.

Select the **From Currency** and **To Currency** you want to see exchange rates between. This mode allows you to **Add**, **Delete** and **Edit**, as well as to **Clear History** of exchange rates between selected currencies.

Date	Rate
30.10.06	1,0982
31.10.06	1,09
01.11.06	1,10
01.11.06	1,00

20.3 Today plug-in setup

You can select information for your today plug-in here. Press an appropriate button to open available items list and mark chosen items.

There are no additional options for scheduled transactions; the checkbox includes all transactions scheduled on today.

20.4 Password

You can protect your information from unauthorized access by setting a password. For this purpose, select the **Password** tab:

If you want to set a password, select the function **Set Password**. Then enter your password – a sequence of any symbols you like in the field **Input New Password**. To confirm your password, enter it in the field **Repeat New Password**. All the symbols you enter will be shown as "*". You will be asked to enter your password each time you run the program.

You can also set the time upon which your Pocket PC switches into a password-protected mode if no operation was performed by the program during this time. Select the **Screen-Saver-Password** function and set the interval at the end of which this function will be activated. At the end of the selected time, the computer will switch into a password-protected mode. Upon attempting to continue working with the program, you will be asked for a password.

Note. While typing a password, pay your attention to the symbols' register. If you make a mistake three times while entering the password, the program will be blocked. You will be forced to soft reset your Pocket PC to renew the program.

If you want to cancel a password that you have set, move to the settings mode and clear the **Set Password** checkbox. Canceling the **Set Password** automatically cancels the **Screen-Saver-Password** function too.

When all adjustments are set, press **OK**.

21 Working with data

When using the program, it is very important to ensure security of the database and the data's ability to be used by other programs. From this chapter you will learn:

- [How to create an archive data file;](#)
- [How to restore financial data from a backup file;](#)
- [How to clean up a financial database;](#)
- [How to perform data exchange between Cash Organizer and other programs.](#)

21.1 Create and renew archive data file

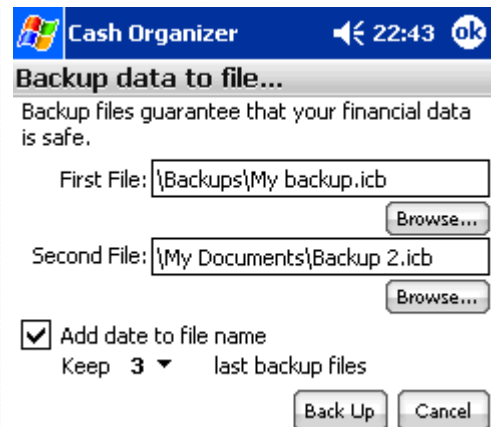
Storage of information in archive data files allows you to:

- Ensure information safety;
- Work with different databases (each of them is kept in a separate file);
- View history of your financial state changes in the past (using the previously saved databases).

At the first saving, the program creates an archive data file; at future savings, you can either create a new archive data file or renew the existing one. To create (renew) the archive data file, select **Tools/File/Backup**.

To create a new archive data file, press the **Browse** button, adjust the required saving parameters in the appropriate fields of the window: file name, folder, and location. Then press **OK**.

Note. Cash Organizer allows to save two backup files at the time. Files saved in the main memory could be included to ActiveSync Files synchronization with your PC, and files saved on storage card, guarantee safety in the event of complete battery discharge.



Add date to file name function automatically inserts current date into file's name. If the function is enabled, you may choose how many of backup files to keep; older ones will be deleted automatically.

Note. Cash Organizer overwrites backup files created during the same day and only the last one will be kept for future use.

When renewing the existing archive data file, all the saving parameters are indicated in the appropriate fields. Press **Back Up** to confirm.

Every time you try to exit the program using **Tools/Exit** menu, the program always offers to backup your financial data.

21.2 Restoring existing archive data file

You can switch to processing the data from the archive file at any time. For this purpose, select **Tools/File/Restore**. You will see the list of all archive data files stored in your Pocket PC. Click the file to start a restore process.

Note. When restoring an archive data file, you lose current database. Do not forget to backup your data before restoring.

21.3 Resetting the database

If you want to create a new database, it is necessary to clear the existing one. To clear the database, select **Tools/File/Reset Database**. The existing database will be deleted and the program will be closed. All unsaved data will be lost.

After you run the program again, you can start creating a new database. The program will work like for the first time: it will offer to create your first account etc. If necessary, you can use the existing database stored in an archive data file.

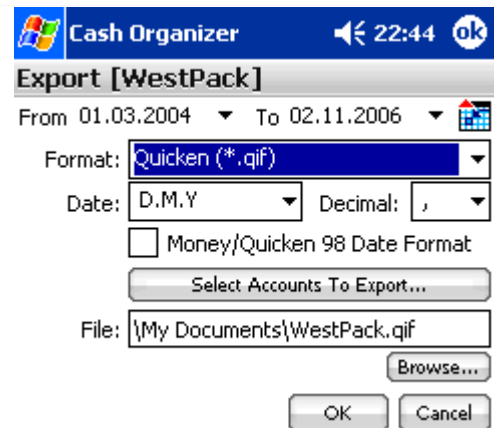
21.4 Data exchange with other applications

Cash Organizer allows sharing financial data with other programs:

21.4.1 Data export

You can export your financial data created in Cash Organizer to other applications (Quicken, MS Money, MS Excel, and MS Word) for further processing. To export the data, switch to the **Account Center** mode; highlight an account you are going to export and select the **Actions/Import and Export/Export** menu item. You can export data related either to the current account or to all accounts.

- In the fields **From** and **To** set the period for which data should be exported.
- Select export data format in the **Format** field in accordance with which program you're going to use for further data processing:



Format	Program
Quicken (*.qif)	Quicken, MS Money, etc.
Pocket Excel (*.pxl)	MS Excel, Pocket Excel, etc
Windows Text (*.txt)	MS Word, Pocket Word, etc
Unicode Text (*.txt)	MS Word, Pocket Word, etc. (in case symbols of local alphabets, not set in Windows, are used)

- Select the format of the date presentation in the **Format Date** field;
- In the **Decimal** field, select "." or "," as a decimal symbol;
- Mark the **MS Money/Quicken 98 Date Format** checkbox if you're going to export the data into the versions of MS Money, Quicken, etc., released in 1998 or earlier;
- Mark **Export All Accounts** checkbox if you want to export all of your accounts (if the field is not marked; only the current account will be exported).
- In the **File Name** field, select the folder where the exported file(s) will be created. Enter the address manually or select the folder using the **Browse** button.

After you have adjusted all the parameters for the data exporting, press **OK**.

21.4.2 Data import

Cash Organizer allows you to import financial data from *.qif, *.ofx *.qfx files (supported by the most financial managers like MS Money, Quicken, etc.). Switch to an account you are going to import data to and select the **Actions/Import and Export/Import...** menu item. You will see a file list of selected data format. To start importing, tap on required file.

22 Technical support

All users of the program are provided with technical support. We will answer all your questions and listen to your wishes. Please visit [Cash Organizer forum](#) or contact the Support Team at support@inesoft.com.

When contacting the Support Team, please provide us with the following information:

- The product version;
- Desktop financial manager name and version if synchronization module is used;
- Mobile device model;
- Description of the problem and the circumstances under which it occurred;
- Warning messages displayed (if applicable).